

## Summary of lifeguard logsheet data, from the City and County of Honolulu, 2022

Beach park	Attendance	Public contact	Prevent. action	Rescues	1st Aid Minor	1st Aid Report	Surf accidents	Drownings
ALA MOANA	2,863,822	181,556	133,886	55	11,401	63	5	-
ALII/HALEIWA	636,953	53,270	33,623	111	2,545	18	4	-
BELLOWS	104,443	17,755	8,637	7	1,748	3	-	-
CHUNS REEF	344,980	43,292	25,976	86	2,239	6	-	-
EHUKAI	599,132	98,764	61,113	124	1,403	24	6	-
HANAUMA	1,363,000	302,301	285,971	210	35,389	153	-	1
KAILUA	992,146	71,299	32,407	12	10,008	24	-	-
KEAUWAULA	187,196	32,419	24,183	20	887	38	-	-
KEWAENA	369,957	52,603	29,796	39	1,513	11	-	1
KUALOA	307,815	18,192	11,769	402	1,122	2	-	-
LANIAKEA	420,317	70,680	43,257	101	31,673	21	6	-
MAILI	411,393	42,268	34,472	24	1,163	22	-	-
MAKAHA	366,482	49,849	38,109	55	1,661	37	-	-
MAKAPUU	214,711	46,599	43,825	111	2,090	12	-	-
NANAKULI	447,329	37,811	105,532	53	803	35	-	-
POKAI BAY	329,229	57,101	19,343	7	6,009	20	-	-
SANDY	533,721	184,485	146,114	826	4,658	42	2	-
SUNSET	593,763	72,913	41,460	69	1,605	12	-	-
WAIKIKI	9,322,325	278,928	201,723	963	40,159	435	85	2
WAIMANALO	690,506	66,314	30,229	94	4,375	21	1	-
WAIMEA	702,380	94,181	82,945	129	1,386	22	-	-
SOUTH SHORE R1&R8 (MOBILE RESPONDER)	-	99,197	47,079	1,458	181	13	2	5
WINDWARD R2R6 (MOBILE RESPONDER)	-	44,129	50,431	125	2,083	27	1	2
NORTH SHORE R3R5 (MOBILE RESPONDER)	-	126,481	59,489	179	98	5	1	3
LEEWARD COAST R4R7 (MOBILE RESPONDER)	-	68,058	30,322	920	172	42	-	1
<b>Total</b>	<b>21,801,600</b>	<b>2,210,445</b>	<b>1,621,691</b>	<b>6,180</b>	<b>166,371</b>	<b>1,108</b>	<b>113</b>	<b>15</b>

## Summary of lifeguard logsheet data, from the City and County of Honolulu, 2021.

Beach park	Attendance	Public contact	Preventive actions	Rescues	1 <sup>st</sup> aid, minor	1 <sup>st</sup> aid, reports	Surfing accidents	Drownings
ALA MOANA	2,951,771	147,328	106,374	54	11,721	58	22	1
ALII/HALEIWA	521,312	49,111	36,901	173	2,045	22	15	0
BELLOWS	104,355	18,711	8,723	18	1,346	4	0	0
CHUNS REEF	385,528	37,742	22,336	143	2,899	20	1	0
EHUKAI	468,349	70,573	44,199	68	1,126	24	3	0
HANAUMA	1,036,095	215,944	225,222	153	24,360	25	0	2
KAILUA	1,077,760	88,308	50,810	32	6,945	23	0	0
KEAUWAULA	166,380	27,120	19,304	14	653	31	1	0
KEWAENA	358,356	49,786	32,566	31	1,373	3	0	0
KUALOA	330,866	16,803	12,610	10	846	0	0	0
LANIAKEA	466,384	66,791	50,531	190	1,388	40	16	0
MAILI	437,512	42,674	30,057	48	2,406	35	0	0
MAKAHA	509,601	68,644	45,914	31	2,481	45	2	0
MAKAPUU	230,635	55,334	52,070	147	1,857	18	1	1
NANAKULI	469,983	46,118	34,234	55	2,110	44	0	1
POKAI BAY	335,919	33,797	17,198	18	2,505	31	0	0
SANDY	613,942	203,062	154,569	443	6,259	60	1	5
SUNSET	500,519	65,688	46,522	88	1,265	32	0	0
WAIKIKI	9,294,101	235,138	177,407	433	28,255	427	107	6
WAIMANALO	672,014	82,433	48,094	176	8,842	26	0	0
WAIMEA	757,815	59,078	54,001	86	290	74	0	0
total	21,689,197	1,680,183	1,269,642	2,411	110,972	1,042	169	16

## Summary of lifeguard logsheet data, from the City and County of Honolulu, 2020.

<b>Beach park</b>	<b>Attendance</b>	<b>Public contact</b>	<b>Preventive actions</b>	<b>Rescues</b>	<b>1<sup>st</sup> aid, minor</b>	<b>1<sup>st</sup> aid, reports</b>	<b>Surfing accidents</b>	<b>Drownings</b>
ALA MOANA	2,588,313	102,903	82,166	27	9,281	44	1	3
ALII/HALEIWA	345,321	37,334	23,544	109	1,527	15	7	0
BELLOWS	60,717	8,185	4,174	10	833	1	2	0
CHUNS REEF	197,551	28,993	16,688	95	1,138	9	4	0
EHUKAI	438,545	61,407	36,416	78	1,176	18	2	0
HANAUMA	370,088	97,662	72,858	116	9,168	17	0	2
KAILUA	688,512	53,623	22,165	9	3,806	10	0	0
KEAUWAULA	66,488	11,909	7,880	16	436	12	0	0
KEWAENA	252,325	40,534	23,241	17	988	12	1	0
KUALOA	140,935	6,903	3,059	3	253	0	0	0
LANIAKEA	259,060	41,249	25,163	102	994	20	10	0
MAILI	327,504	42,148	30,625	27	1,811	16	0	0
MAKAHA	283,434	49,188	31,073	19	1,546	18	1	0
MAKAPUU	164,020	40,095	37,736	125	1,219	10	0	0
NANAKULI	354,885	40,153	33,301	115	1,456	34	0	0
POKAI BAY	200,521	16,882	10,639	8	1,767	5	0	0
SANDY	518,180	178,305	146,547	1,144	6,900	61	6	0
SUNSET	337,536	58,752	32,197	51	1,331	8	0	0
WAIKIKI	7,246,133	188,598	178,646	106	19,439	176	7	1

WAIMANALO	455,844	52,928	26,677	151	14,907	32	0	0
WAIMEA	520,111	88,749	56,404	87	1,439	15	0	0
<hr/>								
total	15,816,023	1,246,500	901,199	2,415	81,415	533	41	6
<hr/>								

**Summary of lifeguard logsheet data, from the City and County of Honolulu, 2019.**

<b>Beach park</b>	<b>Attendance</b>	<b>Public contact</b>	<b>Preventive actions</b>	<b>Rescues</b>	<b>1<sup>st</sup> aid, minor</b>	<b>1<sup>st</sup> aid, reports</b>	<b>Surfing accidents</b>	<b>Drownings</b>
ALA MOANA	2,837,110	90,353	68,891	51	8,280	67	2	1
ALII/HALEIWA	535,944	45,272	26,857	104	1,962	33	5	0
BELLOWS	119,355	11,017	8,941	14	1,368	3	0	0
CHUNS REEF	335,765	28,844	13,069	148	1,701	32	7	0
EHUKAI	629,997	77,566	43,872	76	1,261	13	3	0
HANAUMA	1,569,866	413,860	272,715	370	33,511	103	0	7
KAILUA	974,631	59,434	26,049	10	5,996	18	0	0
KEAUWAULA	260,597	48,860	34,071	34	1,225	40	0	0
KEWAENA	397,460	44,077	24,670	18	1,077	14	1	0
KUALOA	247,225	12,600	4,759	7	622	5	0	0
LANIAKEA	447,073	49,577	28,915	98	1,498	42	11	0
MAILI	355,496	46,509	32,132	21	2,052	16	0	0
MAKAHA	418,493	74,201	44,580	28	2,477	22	0	0
MAKAPUU	200,097	46,675	37,034	98	2,968	17	1	0
NANAKULI	400,918	43,746	33,987	60	2,114	42	0	0
POKAI BAY	266,908	30,249	14,971	7	1,668	16	0	0
SANDY	558,913	134,508	100,761	388	6,840	80	8	0
SUNSET	457,793	48,005	25,616	35	1,395	12	0	0
WAIKIKI	10,323,929	165,816	111,474	265	18,660	332	18	1

WAIMANALO	514,698	58,253	34,087	142	7,411	31	4	0
WAIMEA	807,573	121,864	76,910	84	2,286	38	1	1
<hr/>								
total	22,659,841	1,651,287	1,064,361	2,058	106,372	976	61	10
<hr/>								

**Summary of lifeguard logsheet data, from the City and County of Honolulu, 2018.**

<b>Beach park</b>	<b>Attendance</b>	<b>Public contact</b>	<b>Preventive actions</b>	<b>Rescues</b>	<b>1<sup>st</sup> aid, minor</b>	<b>1<sup>st</sup> aid, reports</b>	<b>Surfing accidents</b>	<b>Drownings</b>
ALAMOANA	3251,376	92,777	66,150	38	8,986	44	0	0
ALII/HALEIWA	397,290	40,916	21,229	104	1,664	29	6	1
BELLOWS	78,751	7,685	5,248	5	916	1	0	0
CHUNS REEF	352,562	29,709	16,167	109	1,489	8	6	0
EHUKAI	579,434	65,009	42,018	94	1,797	31	1	0
HANAUMA	1,251,444	288,221	208,351	457	33,127	119	0	7
KAILUA	724,178	37,705	17,888	13	4,828	12	0	0
KEAUWAULA	297,179	58,863	41,401	44	1,645	66	0	0
KEWAENA	331,690	44,604	27,862	43	1,149	14	1	0
KUALOA	176,617	9,299	5,365	11	524	1	0	0
LANIAKEA	400,178	36,576	21,432	72	1,206	19	11	0
MAILI	465,457	66,015	43,773	38	2,838	55	0	0
MAKAHA	471,790	92,217	61,710	32	2,655	44	5	0
MAKAPUU	202,572	43,243	32,223	140	1,674	11	2	1
NANAKULI	449,828	56,251	40,158	56	1,752	56	0	0
POKAI BAY	265,256	26,917	16,945	13	1,308	13	0	0
SANDY	549,960	144,858	108,886	378	4,880	61	3	0
SUNSET	398,151	38,231	20,730	30	1,700	18	3	2

WAIKIKI	10,892,764	159,502	100,501	262	20,023	351	26	1
WAIMANALO	486,164	49,245	37,294	64	8,328	20	0	1
WAIMEA	540,310	91,844	65,085	145	2,368	47	4	1
<hr/>								
total	22,562,951	1,479,687	1,000,415	2,148	104,857	1,020	68	14
<hr/>								



**Summary of lifeguard logsheet data, from the City and County of Honolulu, 2017.**

<b>Beach park</b>	<b># Logs expected<sup>1</sup></b>	<b># Logs received</b>	<b>Percent reported<sup>2</sup></b>	<b>Attendance<sup>3</sup></b>	<b>Public contact</b>	<b>Preventive actions</b>	<b>Rescues</b>	<b>1<sup>st</sup> aid, minor</b>	<b>1<sup>st</sup> aid, reports</b>	<b>Surfing accidents</b>	<b>Drownings</b>
ALA MOANA	1,825	1,820	99.7	3,403,274	87,167	56,677	66	9,556	100	1	0
ALII/HALEIWA	365	365	100.0	470,010	41,268	23,319	106	1,679	32	5	0
BELLOWS	119	112	94.1	97,758	8,912	3,336	16	1,597	6	0	0
CHUNS REEF	365	363	99.5	325,556	34,104	18,900	140	1,536	34	17	0
EHUKAI	365	364	99.7	588,817	65,154	35,982	133	1,442	38	3	0
HANAUMA	1,252	1,248	99.7	1,569,756	211,658	171,309	978	36,984	154	0	9
KAILUA	730	730	100.0	799,199	39,724	16,500	21	4,715	32	0	0
KEAUWAULA	365	363	99.5	348,204	75,794	54,426	14	2,028	30	0	0
KEWAENA	365	363	99.5	356,778	44,723	30,704	45	1,794	22	1	0
KUALOA	184	183	99.5	239,616	11,338	6,808	29	690	3	0	0
LANIAKEA	365	334	91.5	385,961	39,768	21,959	104	1,107	37	10	0
MAILI	730	695	95.2	564,909	87,191	60,381	40	4,052	20	0	0
MAKAHA	600	599	99.8	577,923	128,874	86,287	32	3,378	37	0	1
MAKAPUU	365	364	99.7	191,251	45,255	36,094	195	2,344	37	1	0
NANAKULI	550	546	99.3	480,865	59,808	44,411	235	2,379	38	0	0
POKAI BAY	365	364	99.7	284,367	31,251	16,148	14	1,957	24	0	0
SANDY	730	728	99.7	531,672	139,304	105,849	492	5,513	74	11	1
SUNSET	365	362	99.2	428,817	51,552	26,230	48	1,585	26	3	0
WAIKIKI	2,555	2,539	99.4	10,968,557	169,917	105,982	376	26,502	518	30	4
WAIMANALO	730	730	100.0	627,562	63,263	40,440	145	10,417	21	0	1
WAIMEA	365	324	88.8	625,483	95,803	78,312	111	2,062	35	10	0
<b>total</b>	<b>13,655</b>	<b>13,496</b>	<b>98.8</b>	<b>23,866,335</b>	<b>1,531,828</b>	<b>1,040,054</b>	<b>3,340</b>	<b>123,317</b>	<b>1,318</b>	<b>92</b>	<b>16</b>

<sup>1</sup>The number of expected logsheets was computed differently, depending on the beach. For most beaches, this number was 365 times the number of stations (e.g. Ala Moana = 365 days \* 5 stations = 1,825).

<sup>2</sup>The “percent reported” column is the ratio of the number of logsheets received to the number expected. Use the reciprocal of this percentage to estimate an annual total. Example: the estimated attendance at Ala Moana = (1/99.7%) \* 3,403,274= 3,413,515.

<sup>3</sup>Attendance is based on headcounts taken 3 times by Water Safety Officers during an 8-hour workday.

**Summary of lifeguard logsheet data, from the City and County of Honolulu, 2016.**

<b>Beach park</b>	<b># Logs expected<sup>1</sup></b>	<b># Logs received</b>	<b>Percent reported<sup>2</sup></b>	<b>Attendance<sup>3</sup></b>	<b>Public contact</b>	<b>Preventive actions</b>	<b>Rescues</b>	<b>1<sup>st</sup> aid, minor</b>	<b>1<sup>st</sup> aid, reports</b>	<b>Surfing accidents</b>	<b>Drownings</b>
ALA MOANA	1,830	1,825	99.7	3,306,358	78,106	50,859	49	10,479	36	0	3
ALII/HALEIWA	366	363	99.2	492,187	43,400	22,261	91	2,127	20	8	0
BELLOWS	122	110	90.2	140,033	10,600	4,392	17	2,076	7	0	0
CHUNS REEF	366	364	99.5	286,024	27,630	14,933	107	1,229	23	10	0
EHUKAI	366	309	84.4	458,954	55,370	32,829	160	1,457	20	8	0
HANAUMA	1,256	1239	98.6	1,645,555	184,515	122,497	761	31,364	127	0	2
KAILUA	732	731	99.9	800,391	39,774	16,584	25	4,904	29	2	0
KEAUWAULA	366	342	93.4	283,021	60,575	43,275	64	3,363	44	13	0
KEWAENA	366	366	100.0	300,738	43,878	23,812	40	1,399	19	6	1
KUALOA	190	175	92.1	202,662	9,261	4,579	37	433	6	0	0
LANIAKEA	366	366	100.0	343,713	40,844	22,050	118	1,619	49	11	0
MAILI	732	684	93.4	511,715	81,531	56,650	59	4,482	22	3	0
MAKAHA	732	728	99.5	669,544	142,549	92,793	76	5,956	66	13	2
MAKAPUU	366	366	100.0	230,997	73,079	60,887	320	3,204	10	3	0
NANAKULI	566	559	98.8	483,295	57,229	45,985	61	2,273	49	0	0
POKAI BAY	732	366	50.0	294,487	26,615	16,829	17	2,032	19	0	0
SANDY	732	731	99.9	587,601	148,306	118,321	464	8,179	92	13	0
SUNSET	366	351	95.9	361,399	43,217	22,919	41	1,417	21	3	0
WAIKIKI	2562	2,559	99.9	11,518,754	164,033	96,288	345	31,135	619	42	3
WAIMANALO	732	731	99.9	687,434	64,285	39,850	52	11,921	9	1	0
WAIMEA	366	361	98.6	781,706	106,626	73,892	213	1,985	52	21	0
total	14,212	13,626	95.9	24,386,567	1,501,423	982,485	3,117	133,034	1,339	157	11

<sup>1</sup>The number of expected logsheets was computed differently, depending on the beach. For most beaches, this number was 366 times the number of stations (e.g. Ala Moana = 366 days \* 5 stations = 1,830).

<sup>2</sup>The “percent reported” column is the ratio of the number of logsheets received to the number expected. Use the reciprocal of this percentage to estimate an annual total. Example: the estimated attendance at Ala Moana = (1/99.7%) \* 3,306,358= 3,316,307.

<sup>3</sup>Attendance is based on headcounts taken 3 times by Water Safety Officers during an 8-hour workday.

**Summary of lifeguard logsheet data, from the City and County of Honolulu, 2015.**

<b>Beach park</b>	<b># Logs expected<sup>1</sup></b>	<b># Logs received</b>	<b>Percent reported<sup>2</sup></b>	<b>Attendance<sup>3</sup></b>	<b>Public contact</b>	<b>Preventive actions</b>	<b>Rescues</b>	<b>1<sup>st</sup> aid, minor</b>	<b>1<sup>st</sup> aid, reports</b>	<b>Surfing accidents</b>	<b>Drownings</b>
ALA MOANA	1,825	1,794	98.3	2,989,643	90,997	63,800	65	7,666	62	1	1
ALII/HALEIWA	365	362	99.2	306,121	42,557	19,824	143	1,869	18	6	0
BELLOWS	117	112	95.7	114,917	14,050	8,042	17	2,493	3	0	0
CHUNS REEF	365	342	93.7	193,390	24,731	11,418	96	1,094	20	7	0
EHUKAI	365	355	97.3	372,544	40,107	24,525	105	1,296	32	18	1
HANAUMA	1,252	1,223	97.7	1,509,961	191,273	111,983	667	37,773	122	0	2
KAILUA	730	720	98.6	781,904	56,337	20,510	68	7,412	37	0	0
KEAUWAULA	365	362	99.2	240,516	61,299	38,582	99	3,563	70	3	2
KEWAENA	365	343	94.0	214,916	27,901	15,321	27	1,124	14	5	0
KUALOA	190	173	91.1	163,718	8,985	4,178	11	677	2	0	0
LANIAKEA	365	348	95.3	274,513	30,574	15,096	109	1,247	22	7	0
MAILI	730	652	89.3	439,455	95,699	66,394	60	4,926	23	1	0
MAKAHA	730	710	97.3	584,734	123,647	89,232	119	8,070	84	7	0
MAKAPUU	365	362	99.2	195,277	54,508	44,330	352	2,787	53	3	0
NANAKULI	926	670	72.4	576,147	69,123	60,320	62	3,341	80	0	0
POKAI BAY	730	507	69.5	367,074	26,005	20,175	26	1,861	20	0	0
SANDY	730	725	99.3	458,677	115,476	89,793	502	7,971	76	9	0
SUNSET	365	356	97.5	290,778	29,252	14,868	78	1,184	32	9	0
WAIKIKI	2,555	2,498	97.8	9,958,576	254,288	167,074	522	30,470	601	32	5
WAIMANALO	730	718	98.4	491,550	65,053	36,191	69	11,784	16	3	0
WAIMEA	365	319	87.4	444,562	66,694	42,225	178	1,441	37	7	0
<b>total</b>	<b>14,530</b>	<b>13,651</b>	<b>94.0</b>	<b>20,968,973</b>	<b>1,488,556</b>	<b>963,881</b>	<b>3,375</b>	<b>140,049</b>	<b>1,424</b>	<b>118</b>	<b>11</b>

<sup>1</sup>The number of expected logsheets was computed differently, depending on the beach. For most beaches, this number was 365 times the number of stations (e.g. Ala Moana = 365 days \* 5 stations = 1,825).

<sup>2</sup>The “percent reported” column is the ratio of the number of logsheets received to the number expected. Use the reciprocal of this percentage to estimate an annual total. Example: the estimated attendance at Ala Moana = (1/98.3%) \* 2,989,643= 3,041,346.

<sup>3</sup>Attendance is based on headcounts taken 3 times by Water Safety Officers during an 8-hour workday.

### Summary of lifeguard logsheet data, from the City and County of Honolulu, 2014.

Beach park	# Logs expected <sup>1</sup>	# Logs received	Percent reported <sup>2</sup>	Attendance <sup>3</sup>	Public contact	Preventive actions	Rescues	1 <sup>st</sup> aid, minor	1 <sup>st</sup> aid, reports	Surfing accidents	Drownings
ALA MOANA	1,825	1,813	99.3	2,248,103	94,479	56,870	44	9,455	71	6	2
ALII/HALEIWA	365	362	99.2	330,013	29,026	15,885	98	1,829	21	45	0
BELLOWS	117	111	94.9	75,323	8,481	2,922	9	1,688	3	0	0
CHUNS REEF	365	360	98.6	223,209	26,514	13,486	110	1,311	30	54	0
EHUKAI	365	361	98.9	397,746	43,808	30,187	117	1,353	52	42	0
HANAUMA	1,252	1,220	97.4	1,082,475	81,056	84,134	557	21,313	44	0	5
KAILUA	730	730	100.0	515,598	40,063	13,356	23	4,201	17	3	0
KEAUWAULA	365	365	100.0	153,968	43,357	30,698	35	2,612	34	1	0
KEWAENA	365	363	99.5	221,966	28,479	13,998	36	1,185	17	11	0
KUALOA	190	182	95.8	164,840	8,729	4,296	5	596	1	0	0
LANIAKEA	365	361	98.9	340,250	27,076	14,477	95	1,375	26	97	0
MAILI	730	725	99.3	379,587	86,365	58,472	28	4,807	16	5	0
MAKAHA	730	725	99.3	434,357	117,268	79,137	67	5,518	61	2	0
MAKAPUU	365	362	99.2	132,780	36,415	27,240	313	2,237	19	16	0
NANAKULI	926	907	97.9	530,264	85,421	67,611	113	3,099	47	6	0
POKAI BAY	730	729	99.9	369,865	40,330	31,321	2	2,217	13	0	2
SANDY	730	724	99.2	344,011	96,991	71,027	438	5,260	69	27	1
SUNSET	365	361	98.9	318,219	30,913	14,793	57	1,213	11	16	0
WAIKIKI	2,555	2,542	99.5	8,269,410	343,286	208,368	464	28,175	604	126	4
WAIMANALO	730	729	99.9	267,983	37,852	17,675	16	7,558	15	2	0
WAIMEA	365	358	98.1	540,441	82,320	42,575	125	1,983	47	25	0
total	14,530	14,390	99.0	17,340,408	1,388,229	898,528	2,752	108,985	1,218	484	14

<sup>1</sup>The number of expected logsheets was computed differently, depending on the beach. For most beaches, this number was 366 times the number of stations (e.g. Ala Moana = 365 days \* 5 stations = 1,825).

<sup>2</sup>The “percent reported” column is the ratio of the number of logsheets received to the number expected. Use the reciprocal of this percentage to estimate an annual total. Example: the estimated attendance at Ala Moana = (1/99.3%) \* 2,248,103 = 2,263,951.

<sup>3</sup>Attendance is based on headcounts taken 3 times by Water Safety Officers during an 8-hour workday.

### Summary of lifeguard logsheet data, from the City and County of Honolulu, 2013.

Beach park	# Logs expected <sup>1</sup>	# Logs received	Percent reported <sup>2</sup>	Attendance <sup>3</sup>	Public contact	Preventive actions	Rescues	1 <sup>st</sup> aid, minor	1 <sup>st</sup> aid, reports	Surfing accidents	Drownings
ALA MOANA	1,825	1,809	99.1	2,631,860	88,946	45,856	126	8,645	104	26	2
ALII/HALEIWA	365	356	97.5	325,429	24,823	13,950	58	1,933	31	29	0
BELLOWS	117	114	97.4	77,333	6,697	3,023	15	1,726	5	0	0
CHUNS REEF	365	362	99.2	217,120	24,503	12,093	100	1,652	25	57	0
EHUKAI	365	338	92.6	306,659	31,132	15,598	86	1,494	53	59	0
HANAUMA	1,248	1,236	99.0	1,139,142	114,652	77,719	473	24,865	97	0	1
KAILUA	730	728	99.7	430,824	24,490	8,294	13	3,321	19	0	0
KEAUWAULA	365	365	100.0	163,280	50,524	32,311	28	1,267	19	6	0
KEWAENA	365	358	98.1	242,339	27,664	15,246	27	1,069	18	19	0
KUALOA	190	172	90.5	139,559	9,075	4,407	13	499	3	0	0
LANIAKEA	365	358	98.1	373,946	24,304	11,289	130	1,504	24	72	0
MAILI	730	726	99.5	445,272	116,364	80,837	37	5,088	14	1	0
MAKAHA	730	728	99.7	470,155	127,516	84,930	50	4,814	51	11	0
MAKAPUU	365	364	99.7	119,321	29,738	21,730	256	2,224	19	3	0
NANAKULI	926	900	97.2	476,726	98,892	73,710	169	2,981	45	6	0
POKAI BAY	730	727	99.6	422,885	42,265	31,816	38	2,339	9	0	0
SANDY	730	726	99.5	328,147	95,112	71,603	406	5,739	76	4	0
SUNSET	365	355	97.3	339,854	35,143	16,387	53	1,022	34	20	0
WAIKIKI	2,555	2,549	99.8	8,285,222	154,579	86,097	494	26,696	560	116	2
WAIMANALO	730	725	99.3	238,667	28,768	13,002	42	5,636	11	2	0
WAIMEA	365	360	98.6	564,214	68,625	38,790	181	1,875	65	19	0
total	14,526	14,356	98.8	17,737,954	1,223,812	758,688	2,795	106,389	1,282	450	5

<sup>1</sup>The number of expected logsheets was computed differently, depending on the beach. For most beaches, this number was 366 times the number of stations (e.g. Ala Moana = 365 days \* 5 stations = 1,825).

<sup>2</sup>The “percent reported” column is the ratio of the number of logsheets received to the number expected. Use the reciprocal of this percentage to estimate an annual total. Example: the estimated attendance at Ala Moana = (1/99.1%) \* 2,631,860 = 2,655,762.

<sup>3</sup>Attendance is based on headcounts taken 3 times by Water Safety Officers during an 8-hour workday.

**Summary of lifeguard logsheet data, from the City and County of Honolulu, 2012.**

<b>Beach park</b>	<b># Logs expected<sup>1</sup></b>	<b># Logs received</b>	<b>Percent reported<sup>2</sup></b>	<b>Attendance<sup>3</sup></b>	<b>Public contact</b>	<b>Preventive actions</b>	<b>Rescues</b>	<b>1<sup>st</sup> aid, minor</b>	<b>1<sup>st</sup> aid, reports</b>	<b>Surfing accidents</b>	<b>Drownings</b>
ALA MOANA	1,830	1,825	99.7	2,450,863	73,489	37,594	64	7,553	109	27	0
ALII/HALEIWA	366	364	99.5	316,262	23,645	11,376	119	1,667	26	57	0
BELLOWS	117	112	95.7	62,385	6,141	2,505	2	1,346	1	0	0
CHUNS REEF	366	364	99.5	228,699	23,987	12,148	98	1,396	25	76	0
EHUKAI	366	364	99.5	339,406	33,355	16,401	46	1,404	63	53	0
HANAUMA	1,201	1,178	98.1	1,298,908	121,396	81,356	524	23,539	119	0	2
KAILUA	572	569	99.5	446,210	23,958	8,431	25	2,823	37	4	1
KEAUWAULA	366	363	99.2	175,371	51,503	34,009	21	2,211	27	15	0
KEWAENA	366	361	98.6	208,900	23,879	11,780	25	1,153	21	17	0
KUALOA	190	189	99.5	141,991	9,593	4,569	22	553	4	3	0
LANIAKEA	366	365	99.7	293,685	28,339	14,157	122	1,338	39	98	0
MAILI	732	728	99.5	517,847	122,570	75,632	24	6,286	14	3	0
MAKAHA	732	723	98.8	526,978	134,973	94,220	49	6,139	50	28	0
MAKAPUU	366	366	100.0	126,545	28,628	21,021	311	2,992	16	26	0
NANAKULI	928	898	96.8	724,214	104,169	70,635	128	3,367	42	23	0
POKAI BAY	732	732	100.0	537,876	59,868	38,431	20	1,982	17	2	0
SANDY	732	732	100.0	344,475	87,182	64,175	472	6,089	65	55	0
SUNSET	366	362	98.9	331,789	32,645	16,589	55	1,002	34	34	0
WAIKIKI	2,562	2,436	95.1	8,251,984	150,782	78,975	369	30,811	522	271	2
WAIMANALO	732	726	99.2	234,744	26,302	12,380	5	4,549	15	5	0
WAIMEA	366	365	99.7	542,162	62,014	38,380	118	1,839	90	36	0
<b>total</b>	<b>14,354</b>	<b>14,122</b>	<b>98.4</b>	<b>18,101,294</b>	<b>1,228,418</b>	<b>744,764</b>	<b>2,619</b>	<b>110,039</b>	<b>1,336</b>	<b>833</b>	<b>5</b>

<sup>1</sup>The number of expected logsheets was computed differently, depending on the beach. For most beaches, this number was 366 times the number of stations (e.g. Ala Moana = 366 days \* 5 stations = 1,830).

<sup>2</sup>The "percent reported" column is the ratio of the number of logsheets received to the number expected. Use the reciprocal of this percentage to estimate an annual total. Example: the estimated attendance at Ala Moana = (1/99.7%) \* 2,450,863 = 2,458,238.

<sup>3</sup>Attendance is based on headcounts taken 3 times by Water Safety Officers during an 8-hour workday.

**Summary of lifeguard logsheet data, from the City and County of Honolulu, 2011.**

<b>Beach park</b>	<b># Logs expected<sup>1</sup></b>	<b># Logs received</b>	<b>Percent reported<sup>2</sup></b>	<b>Attendance<sup>3</sup></b>	<b>Public contact</b>	<b>Preventive actions</b>	<b>Rescues</b>	<b>1<sup>st</sup> aid, minor</b>	<b>1<sup>st</sup> aid, reports</b>	<b>Surfing accidents</b>	<b>Drownings</b>
ALA MOANA	1,825	1,804	98.8	2,637,353	89,511	40,901	80	9,075	80	19	0
ALII/HALEIWA	365	361	98.9	293,667	19,630	10,846	145	2,025	39	24	0
BELLOWS	117	112	95.7	64,922	6,125	2,384	29	1,017	0	2	0
EHUKAI	365	364	99.7	357,746	26,648	16,020	71	1,396	54	44	0
HANAUMA	731	716	97.9	907,678	79,444	52,146	333	14,485	38	1	2
KAILUA	365	364	99.7	345,336	16,340	6,943	30	1,995	23	2	1
KEAUWAULA	365	361	98.9	166,696	36,127	26,065	31	1,813	22	5	2
KEWAENA	365	361	98.9	201,062	20,777	11,971	26	1,048	10	4	1
KUALOA	190	155	81.6	131,181	7,540	3,213	21	361	4	0	0
MAILI	730	724	99.2	516,479	94,695	56,816	32	5,105	16	6	0
MAKAHA	730	712	97.5	573,837	113,015	74,019	93	5,972	54.2	27	0
MAKAPUU	365	363	99.5	133,042	26871	20,492	252	2,090	18	19	0
NANAKULI	928	904	97.4	586,289	61,870	46,849	106	2,584	18	5	0
POKAIBAY	730	727	99.6	578,552	55,447	30,289	33	2,298	18	2	0
SANDY	730	727	99.6	330,249	77,324	51,605	351	6,724	77	63	0
SUNSET	365	363	99.5	300,247	22,493	13,482	42	1,210	26	17	0
WAIKIKI	2,555	2,515	98.4	7,535,001	160,229	86,538	466	31,056	597	272	0
WAIMANALO	732	728	99.5	228,861	30,115	14,970	48	4,626	9	4	0
WAIMEA	365	362	99.2	519,268	45,296	32,353	129	1,765	67	29	0
<b>total</b>	<b>12,918</b>	<b>12,723</b>	<b>98.5</b>	<b>16,407,466</b>	<b>989,497</b>	<b>597,902</b>	<b>2,318</b>	<b>96,645</b>	<b>1,170</b>	<b>545</b>	<b>6</b>

<sup>1</sup>The number of expected logsheets was computed differently, depending on the beach. For most beaches, this number was 365 times the number of stations (e.g. Ala Moana = 365 days \* 5 stations = 1,825).

<sup>2</sup>The "percent reported" column is the ratio of the number of logsheets received to the number expected. Use the reciprocal of this percentage to estimate an annual total. Example: the estimated attendance at Ala Moana = (1/98.8%) \* 2,637,353 = 2,642,638.

<sup>3</sup>Attendance is based on headcounts taken 3 times by Water Safety Officers during an 8-hour workday.

**Summary of lifeguard logsheet data, from the City and County of Honolulu, 2010.**

Beach park	# Logs received	# Logs expected <sup>1</sup>	Percent reported <sup>2</sup>	Attendance <sup>3</sup>	Public contact	Preventive actions	Rescues	1 <sup>st</sup> aid, minor	1 <sup>st</sup> aid, reports	Surfing accidents	Drownings
ALA MOANA	1,825	1,818	99.6	2,449,634	101,501	46,537	53	8,677	90	17	0
ALII/HALEIWA	365	342	93.7	249,566	21,037	12,034	81	1,037	14	8	0
BELLOWS	117	113	96.6	77,221	7,850	3,150	23	1,616	2	1	0
EHUKAI	365	353	96.7	272,491	21,205	11,404	70	1,003	33	26	0
HANAUMA	624	613	98.2	899,330	83,485	48,632	418	14,507	55	0	2
KAILUA	365	364	99.7	381,567	23,477	8,132	13	3,095	26	4	0
KEAUWAULA	365	365	100.0	147,607	25,481	18,046	21	1,303	42	24	0
KEWAENA	365	346	94.8	178,846	17,909	8,557	28	1,040	12	9	0
KUALOA	190	161	84.7	106,651	8,852	2,944	14	498	5	0	0
MAILI	730	714	97.8	449,185	48,660	29,031	55	2,283	9	1	0
MAKAHA	730	711	97.4	456,022	74,962	51,773	49	4,316	35	15	0
MAKAPUU	365	363	99.5	150,289	31,466	21,696	149	2,185	26	14	0
NANAKULI	928	890	95.9	619,805	61,826	47,018	51	1,809	21	0	0
POKAIBAY	730	721	98.8	653,390	47901	25,367	14	1,480	14	0	0
SANDY	730	727	99.6	347,922	79,791	51,914	360	6,116	89	41	0
SUNSET	365	339	92.9	265,781	21,217	11,913	61	831	21	11	0
WAIKIKI	2,555	2,548	99.7	7,099,437	323,283	146,847	320	54,851	595	281	1
WAIMANALO	732	727	99.3	225,566	30,029	15,945	11	4,449	10	2	0
WAIMEA	365	352	96.4	523,982	37580	22,485	77	1,662	59	26	0
total	12,431	12,567	101.1	15,554,292	1,067,512	583,425	1,868	112,758	1,158	480	3

<sup>1</sup>The number of expected logsheets was computed differently, depending on the beach. For most beaches, this number was 365 times the number of stations (e.g. Ala Moana = 365 days \* 5 stations = 1,825). For Hanauma, the expected number was 312 for each station (624 total), since this beach is closed each Tuesday.

<sup>2</sup>The "percent reported" column is the ratio of the number of logsheets received to the number expected. Use the reciprocal of this percentage to estimate an annual total. Example: the estimated attendance at Ala Moana = (1/99.6%) \* 2,449,634 = 2,459,472.

<sup>3</sup>Attendance is based on headcounts taken 3 times by Water Safety Officers during an 8-hour workday.



**Summary of lifeguard logsheet data, from the City and County of Honolulu, 2009.**

Beach park	# Logs received	# Logs expected <sup>1</sup>	Percent reported <sup>2</sup>	Attendance <sup>3</sup>	Public contact	Preventive actions	Rescues	1 <sup>st</sup> aid, minor	1 <sup>st</sup> aid, reports	Surfing accidents	Drownings
ALA MOANA	1753	1825	96.1	2,414,038	102,086	47,471	111	8,563	81	14	1
ALII/HALEIWA	326	365	89.3	210,680	15,493	8,448	62	982	16	12	1
BELLOWS	112	117	95.7	70,040	6,332	3,055	10	1,054	2	1	0
EHUKAI	362	365	99.2	277,907	20,588	11,555	67	961	41	38	0
HANAUMA	609	624	97.6	889,735	91,019	56,373	307	15,717	50	0	0
KAILUA	363	365	99.5	365,460	28,976	10,988	20	4,002	22	0	0
KEAUWAULA	359	365	98.4	156,817	29,516	19,072	53	1,590	22	2	0
KEWAENA	358	365	98.1	185,678	20,610	10,922	22	973	19	14	1
KUALOA	188	190	98.9	115,456	9,727	3,111	10	374	3	0	0
MAILI	625	730	85.6	421,639	54,973	31,470	92	2,839	15	2	0
MAKAHA	606	730	83.0	344,445	56,671	39,592	56	4,551	26	14	0
MAKAPUU	365	365	100.0	151,646	29,899	20,289	140	1,992	18	5	0
NANAKULI	678	928	73.1	602,399	55,667	42,169	82	1,191	23	4	0
POKAIBAY	543	730	74.4	452,072	36,946	22,210	17	1,488	18	0	0
SANDY	728	730	99.7	355,463	84,939	61,367	396	7,207	111	64	0
SUNSET	362	365	99.2	276,186	24,118	12,574	41	829	21	18	0
WAIKIKI	2550	2555	99.8	7,129,379	184,206	86,342	331	31,349	646	346	0
WAIMANALO	727	732	99.3	211,670	29,743	12,445	9	5,024	14	4	0
WAIMEA	361	365	98.9	530,833	40,590	27,942	94	1,555	55	29	0
total	11,975	12,431	96.3	15,161,543	922,099	527,395	1,920	92,241	1,203	567	3

<sup>1</sup>The number of expected logsheets was computed differently, depending on the beach. For most beaches, this number was 365 times the number of stations (e.g. Ala Moana = 365 days \* 5 stations = 1,825). For Hanauma, the expected number was 312 for each station (624 total), since this beach is closed each Tuesday.

<sup>2</sup>The "percent reported" column is the ratio of the number of logsheets received to the number expected. Use the reciprocal of this percentage to estimate an annual total. Example: the estimated attendance at Ala Moana = (1/96.1%) \* 2,414,038 = 2,512,006.

<sup>3</sup>Attendance is based on headcounts taken 3 times by Water Safety Officers during an 8-hour workday.

## Summary of lifeguard logsheet data, from the City and County of Honolulu, 2011.

Beach park	# Logs expected <sup>1</sup>	# Logs received	Percent reported <sup>2</sup>	Attendance <sup>3</sup>	Public contact	Preventive actions	Rescues	1 <sup>st</sup> aid, minor	1 <sup>st</sup> aid, reports	Surfing accidents	Drownings
ALA MOANA	1,825	1,804	98.8	2,637,353	89,511	40,901	80	9,075	80	19	0
ALII/HALEIWA	365	361	98.9	293,667	19,630	10,846	145	2,025	39	24	0
BELLOWS	117	112	95.7	64,922	6,125	2,384	29	1,017	0	2	0
EHUKAI	365	364	99.7	357,746	26,648	16,020	71	1,396	54	44	0
HANAUMA	731	716	97.9	907,678	79,444	52,146	333	14,485	38	1	2
KAILUA	365	364	99.7	345,336	16,340	6,943	30	1,995	23	2	1
KEAUWAULA	365	361	98.9	166,696	36,127	26,065	31	1,813	22	5	2
KEWAENA	365	361	98.9	201,062	20,777	11,971	26	1,048	10	4	1
KUALOA	190	155	81.6	131,181	7,540	3,213	21	361	4	0	0
MAII	730	724	99.2	516,479	94,695	56,816	32	5,105	16	6	0
MAKAHA	730	712	97.5	573,837	113,015	74,019	93	5,972	54.2	27	0
MAKAPUU	365	363	99.5	133,042	26871	20,492	252	2,090	18	19	0
NANAKULI	928	904	97.4	586,289	61,870	46,849	106	2,584	18	5	0
POKAIBAY	730	727	99.6	578,552	55,447	30,289	33	2,298	18	2	0
SANDY	730	727	99.6	330,249	77,324	51,605	351	6,724	77	63	0
SUNSET	365	363	99.5	300,247	22,493	13,482	42	1,210	26	17	0
WAIKIKI	2,555	2,515	98.4	7,535,001	160,229	86,538	466	31,056	597	272	0
WAIMANALO	732	728	99.5	228,861	30,115	14,970	48	4,626	9	4	0
WAINMEA	365	362	99.2	519,268	45,296	32,353	129	1,765	67	29	0
total	12,918	12,723	98.5	16,407,466	989,497	597,902	2,318	96,645	1,170	545	6

<sup>1</sup>The number of expected logsheets was computed differently, depending on the beach. For most beaches, this number was 365 times the number of stations (e.g. Ala Moana = 365 days \* 5 stations = 1,825).

<sup>2</sup>The "percent reported" column is the ratio of the number of logsheets received to the number expected. Use the reciprocal of this percentage to estimate an annual total. Example: the estimated attendance at Ala Moana = (1/98.8%) \* 2,637,353 = 2,642,638.

<sup>3</sup>Attendance is based on headcounts taken 3 times by Water Safety Officers during an 8-hour workday.

Summary of lifeguard logsheet data, from the City and County of Honolulu, 2008.

Beach park	# Logs received	# Logs expected'	Percent reported'	Attendance'	<i>Pd</i> * contact	Ftevendwe Mims	1 <sup>4</sup> aid, minor	report	Rescues	Drownings	Surfing accidents
ALA MOANA	1,823	1,830	99.6	2,125,493	90,968	40,010	5,792	56	50	0	12
ALII/HALEIWA	333	366	91.0	238,770	17,438	9,797	1,075	29	53	0	17
BELLOWS	113	117	96.6	84,127	5,560	3,680	1,100	2	6	0	0
EHUKAI	319	366	87.2	251,364	20,127	10,176	951	63	79	1	51
HANAUMA	621	626	99.2	949,812	66,731	33,082	16,083	85	338	1	0
ICAILUA	365	366	99.7	369,592 -	26,214	9,198	3,385	39	27	0	0
KEAUWAULA	358	366	97.8	124,086	29,976	19,673	1,462	19	31	0	3
KEWAENA	332	366	90.7	177,849	17,954	9,144	1,036	13	4	0	6
KUALOA	174	175	99.4	105,002	8,222	3,539	617	6	0	0	0
MAILI	720	732	98.4	462,445	52,021	36,751	2,563	16	35	0	2
MAICAHHA	354	366	96.7	221,283	35,417	20,826	2,129	9	22	0	3
MAICAFUU	363	366	99.2	147,103	26,802	18,076	1,687	17	133	0	3
NANAKULI	880	930	94.6	541,157	51,993	36,243	1,843	22	51	0	2
POKAI BAY	725	732	99.0	514,694	37,486	23,084	1,997	13	22	0	0
SANDY	728	732	99.5	371,293	69,440	46,940	4,918	79	472	0	52
SUNSET	361	366	98.6	308,880	26,145	13,245	1,131	18	38	0	12
WAIKIKI	2,554	2,562	99.7	6,885,429	197,630	88,982	36,409	725	291	2	392
WAIMANALO	697	732	95.2	203,488	25,773	8,500	3,229	8	3	0	1
WAIMEA	361	366	98.6	585,824	30,629	17,591	2,149	45	76	0	28
<b>total</b>	<b>12,181</b>	<b>12,462</b>	<b>97.7</b>	<b>14,667,691</b>	<b>836,526</b>	<b>448,537</b>	<b>89,556</b>	<b>1,264</b>	<b>1,731</b>	<b>4</b>	<b>584</b>

' The number of expected logsheets was computed differently, depending on the beach. For most beaches, this number was 366 times the number of stations (e.g. Ala Moana = 366 days \* 5 stations = 1,830). For Hanauma, the expected number was 313 for each station (626 total), since this beach is closed each Tuesday.

'The "percent reported" column is the ratio of the number of logsheets received to the number expected. Use the reciprocal of this percentage to estimate an annual total. Example: the estimated attendance at Ala Moana = (1/99.6%) \* 2,125,493 = 2,134,029.

'Attendance is based on headcounts taken 3 times by Water Safety Officers during an 8-hour workday.

**Summary of lifeguard logsheet data, from the City and County of Honolulu, 2007.**

Beach park	# Logs received	# Logs expected*	Percent reported*	Attendance	Public contact	Preventive actions	1" aid, minor	1 <sup>g</sup> aid, report	Rescues	Drowning	Surfing accidents
ALA MOANA	1,816	1,825	99.5	1,710,519	68,276	23,760	5,676	61	68	1	3
ALII/I-IALEIWA	364	365	99.7	277,687	18,979	8,519	1,069	23	33	0	8
BELLOWS	103	117	88.0	87,980	6,437	2,626	1,350	7	10	0	0
EHUKAI	355	365	97.3	303,835	20,520	9,333	933	50	69	0	45
HANAUMA	616	624	98.7	1,088,660	66,992	27,534	16,270	74	377	0	0
KAILUA	362	365	99.2	365,601	21,888	8,199	2,623	21	14	0	1
KEAUWAULA	360	365	98.6	111,848	17,210	11,185	1,058	15	21	0	5
KEWAENA	359	365	98.4	179,168	18,651	8,960	896	8	11	0	6
MAILI	724	730	99.2	472,582	44,473	25,066	2,610	29	67	0	5
MAKAHA	699	730	95.8	401,922	45,768	22,440	3,008	18	41	0	7
MAKAPUU	365	365	100.0	175,631	26,584	18,015	1,682	13	186	0	5
NANAKULI	899	930	96.7	403,317	27,410	17,424	1,725	9	34	0	1
POICAI BAY	721	730	98.8	446,737	32,288	16,678	1,873	25	17	0	0
SANDY	712	730	97.5	363,058	59,569	41,835	4,208	73	392	0	31
SUNSET	355	365	97.3	332,357	26,418	12,633	1,152	24	49	0	14
WAIKIKI	2542	2555	99.5	6,474,096	154,508	73,783	32,671	667	256	1	327
WAIMANALO	709	732	96.9	209,647	25,552	8,597	3,918	12	31	0	4
WAIMEA	365	365	100.0	601,396	29,666	17,864	1,540	55	77	0	16
ALL BEACHES	12,426	12,623	98.4	14,006,041	711,189	354,452	84,262	1,184	1,753	2	478

\*The number of expected logsheets was computed differently, depending on the beach. For most beaches, this number was 365 times the number of stations (e.g. Ala Moana = 365 days \* 5 stations = 1,825). For Hanauma, the expected number was 313 for each station (626 total), since this beach is closed each Tuesday.

\*The "percent reported" column is the ratio of the number of logsheets received to the number expected. Use the reciprocal of this percentage to estimate an annual total. Example: the estimated attendance at Ala Moana = (1/99.5%) \* 1,710,519 = 1,719,115.

@ Attendance is based on headcounts taken 3 times by Water Safety Officers during an 8-hour workday.

**Summary of lifeguard logsheet data, from the City and County of Honolulu, 2006.**

<b>Beach park</b>	<b># Logs received</b>	<b># Logs expected*</b>	<b>Percent reported<sup>†</sup></b>	<b>Attendance<sup>@</sup></b>	<b>Public contact</b>	<b>Preventive actions</b>	<b>1<sup>st</sup> aid, minor</b>	<b>aid, report</b>	<b>Rescues</b>	<b>Drowning</b>	<b>Surfing accidents</b>
ALA MOANA	1,808	1,825	99.1	1,239,616	47,408	19,949	3,651	74	39	4	11
ALIUHALEIWA	360	365	98.6	306,186	20,388	9,439	1,190	13	15	0	6
BELLOWS	103	117	88.0	85,275	5,916	2,490	1,086	1	10	0	0
EHUKAI	360	365	98.6	316,501	21,193	10,616	1,124	49	23	0	45
HANAUMA	620	626	99.0	1,237,907	69,056	32,376	21,659	70	275	0	0
KAILUA	365	365	100.0	349,913	18,782	6,442	1,617	15	11	0	0
KEAUWAULA	361	365	98.9	125,041	16,006	11,016	959	15	12	0	6
KEWAENA	361	365	98.9	185,837	16,877	7,921	933	21	4	0	12
KUALOA	135	165	81.8	107,988	5,310	2,176	368	1	7	0	0
MAILI	707	730	96.8	367,089	37,399	20,107	3,039	12	34	0	1
MAKAHA	671	730	91.9	385,416	32,687	18,696	2,635	32	18	0	14
MAKAPUU	360	365	98.6	160,614	28,711	18,656	1,217	16	126	0	5
NANAKUL I	844	930	90.8	335,613	21,404	15,067	1,271	20	21	0	0
POKAIBAY	706	730	96.7	304,415	25,604	15,830	990	11	18	0	0
SANDY	710	730	97.3	383,469	60,191	42,986	4,926	70	379	<b>0</b>	<b>16</b>
SUNSET	363	365	99.5	439,877	25,505	14,284	1,441	26	29	0	16
WAIKIKI	2524	2555	98.8	6,644,927	134,779	64,604	26,824	723	309	2	231
WAIMANALO	692	732	94.5	217,991	23,712	7,298	2,883	24	13	0	4
WAIMEA	355	365	97.3	511,643	26,662	15,678	1,966	36	45	0	13
ALL BEACHES	12,405	12,788	97.0	13,705,318	637,590	335,631	79,779	1,229	1,388	6	380

\*The number of expected logsheets was computed differently, depending on the beach. For most beaches, this number was 365 times the number of stations (e.g. Ala Moana = 365 days \* 5 stations = 1,825). For Hanauma, the expected number was 313 for each station (626 total), since this beach is closed each Tuesday.

†The "percent reported" column is the ratio of the number of logsheets received to the number expected. Use the reciprocal of this percentage to estimate an annual total. Example: the estimated attendance at Waimea = (1/97.3%) \* 511,643 = 525,841.

@Attendance is based on headcounts taken 3 times by Water Safety Officers during an 8-hour workday.

**Summary of lifeguard logsheet data, from the City and County of Honolulu, 2005.**

<b>Beach park</b>	<b># Logs received</b>	<b># Logs expected*</b>	<b>Percent reported"</b>	<b>Attendance</b>	<b>Firststak- minor</b>	<b>Fr/staid- rworks</b>	<b>Rescues</b>	<b>Drawings</b>	<b>Preventive actions</b>	<b>Surfing accidents</b>	<b>Lost children</b>
ALA MOANA	1,818	1,825	99.6	1,708,992	4,504	91	76	0	26,096	11	14
ALII/HALEIWA	360	365	98.6	353,021	1,361	22	44	0	10,683	18	0
BELLOWS	111	117	94.9	110,925	1,090	3	5	0	4,683	1	0
EHLIKAI	360	365	98.6	352,458	1,083	66	49	2	12,119	59	0
HANAUMA	616	626	98.4	1,629,939	18,759	60	328	2	29,815	0	6
KAILUA	364	365	99.7	360,410	1,861	17	10	0	6,719	2	2
KEAUWAULA	362	365	99.2	134,518	876	29	18	0	13,770	9	0
KEWAENA	363	365	99.5	175,095	807	21	3	1	9,393	17	0
KUALOA	158	165	95.8	219,415	517	7	3	1	3,532	0	0
MAILI	715	730	97.9	359,256	1,005	11	28	0	23,386	1	0
MAKAHA	686	730	94.0	486,502	2,661	37	24	0	24,380	20	0
MAKAPUU	363	365	99.5	182,859	2,084	24	144	0	17,985	11	0
NANAKULI	858	930	92.3	342,677	1,291	9	132	0	16,016	1	0
POKAI BAY	723	730	99.0	376,730	1,322	15	6	0	13,704	1	1
SANDY	716	730	98.1	432,364	4,497	121	269	0	38,976	67	3
SUNSET	363	365	99.5	451,534	1,254	15	46	0	16,279	10	0
WAIKIKI	2553	2555	99.9	7,316,180	25,021	463	174	1	75,132	204	271
WAIMANALO	725	732	99.0	284,496	3,363	14	13	0	9,779	7	2
WAIMEA	363	365	99.5	598,412	2,261	39	74	0	23,845	19	0
ALL BEACHES	12,577	12,788	98.4	15,875,783	75,617	1,064	1,446	7	376,292	458	299

\*The **number** of expected logsheets was computed differently, depending on the beach. For most beaches, this number was 365 times the number of stations (e.g. Ala Moana = 366 days \* 5 stations = 1,825). For Hanauma, the expected number was 313 for each station (626 total), since this beach is closed each Tuesday.

"The "percent reported" column is the ratio of the number of logsheets received to the number expected. Use the reciprocal of this percentage to estimate an annual total. Example: the estimated attendance at Waimea = (1/99.5%) \* 598,412 = 601,419.

"Attendance is based on headcounts taken 3 times by Water Safety Officers during an 8-hour workday.

Annual Logsheet Data, from the City and County of Honolulu, 2004.

Beach park	# Logs received	# Logs expected*	Percent reported"	Attendance@	Fistaid-minor	lista& Molls	Rescues	Drownings	Prey. actions	Surfing accidents	Lost children
ALA MOANA	1,758	1,830	96.1	1,534,233	3,826	87	57	0	21,058	15	23
ALII/HALEIWA	364	366	99.5	374,700	1,473	21	43	0	10,166	17	0
BELLOWS	112	118	94.9	124,066	1,610	3	11	0	4,829	0	0
EHUKAI	362	366	98.9	434,095	1,087	37	48	0	9,666	44	0
HANAUMA	615	628	97.9	1,753,250	18,305	92	351	0	26,955	0	2
KAILUA	366	366	100.0	404,524	2,273	16	13	0	6,109	5	1
KEAUWAULA	364	366	99.5	150,303	960	27	34	1	12,017	13	0
KEWAENA	364	366	99.5	202,846	722	22	11	0	8,536	15	4
KUALOA	172	181	95.0	255,282	662	4	4	0	3,643	0	0
MAILI	714	732	97.5	484,044	1,740	17	26	0	24,439	2	0
MAKAHA	692	732	94.5	451,492	2,276	42	37	0	23,229	19	0
MAKAPUU	364	366	99.5	214,772	3,237	21	177	0	20,094	30	0
NANAKULI	843	913	92.3	396,374	1,781	34	65	0	17,349	4	0
POKA1 BAY	722	732	98.6	436,674	1,486	22	20	0	16,402	4	0
SANDY	718	732	98.1	469,836	5,026	135	237	0	44,643	71	0
SUNSET	364	366	99.5	530,866	962	22	39	0	12,702	14	0
WAIKIKI	2559	2562	99.9	8,560,596	29,244	468	174	1	70,861	249	357
WAIMANALO	722	732	98.6	300,749	5,093	24	12	0	15,564	10	1
WAIMEA	365	366	99.7	740,704	1,772	66	78	0	20,930	27	0
ALL BEACHES	12,540	12,820	97.8	17,819,406	83,535	1,160	1,437	2	369,192	539	388

\*The number of expected logsheets was computed differently, depending on the beach. For most beaches, this number was 366 times the number of stations (e.g. Ala Moana = 366 days \* 5 stations = 1,830). For Hanauma, the expected number was 312 for each station (624 total), since this beach is closed each Tuesday.

"The "percent reported" column is the ratio of the number of logsheets received and expected. Use the reciprocal of this percentage to estimate an annual total. Example: the estimated attendance at Waimea = (1/99.7%) \* 740,704 = 742,933.

@:Attendance is based on headcounts taken 3 times by Water Safety Officers during an 8-hour workday.

**Summary of lifeguard logsheet data, from the City and County of Honolulu, 2003.**

<b>Beach park</b>	<b># Logs received</b>	<b># Logs expected*</b>	<b>Percent reported"</b>	<b>Attendance@</b>	<b>First ski-minor</b>	<b>Fest&amp; reports</b>	<b>Rescues</b>	<b>Dnurrings</b>	<b>Prey. actions</b>	<b>Surfing alms</b>	<b>Lost children</b>
ALA MOANA	1,759	1825	96.4	1,791,399	3,927	89	66	2	23,496	23	16
ALH/HALEIWA	340	365	93.2	432,196	1,367	23	32	0	10,268	12	0
BELLOWS	113	117	96.6	151,617	1,455	5	24	0	2,658	0	0
EHUKAI	340	365	93.2	488,627	1,117	49	34	1	11,465	36	0
HANAUMA	614	624	98.4	1,923,249	18,596	95	418	2	35,174	0	18
KAILUA	365	365	100.0	383,397	2,264	18	11	0	5,714	3	0
KEAUWAULA	347	365	95.1	100,197	534	26	16	0	9,480	15	0
KEWAENA	340	365	93.2	243,938	777	21	12	0	9,800	11	0
KUALOA	126	171	73.7	242,060	705	0	6	0	3,192	0	2
MAIL!	686	730	94.0	330,483	1,408	8	28	0	17,521	2	0
MAKAHA	670	730	91.8	349,037	1,827	30	31	0	17,431	18	0
MAKAPUU	363	365	99.5	207,833	2,727	16	132	0	27,841	12	0
NANAKULI	834	930	89.7	315,997	1,486	20	30	0	15,392	4	0
FOICAI BAY	667	730	91.4	383,118	1,781	16	9	0	14,334	1	0
SANDY	715	730	97.9	529,017	4,918	127	309	0	52,060	70	0
SUNSET	328	365	89.9	640,318	791	15	23	0	11,715	8	0
WAIKIKI	2552	2555	99.9	8,643,482	31,753	610	179	1	73,003	125	298
WAIMANALO	606	627	96.7	305,115	4,756	22	16	0	13,805	11	0
WAIMEA	342	365	93.7	852,261	1,927	48	80	0	21,451	18	0
ALL BEACHES	12,107	12,689	95.4	18,313,341	84,116	1,238	1,456	6	375,800	569	334

\*The number of expected logsheets was computed differently, depending on the beach. For most beaches, this number was 365 times the number of stations (e.g. Ala Moana = 365 days \* 5 stations = 1,825). For Hanauma, the expected number was 312 for each station (624 total), since this beach is closed each Tuesday. The number of logs expected from Nanakuli was estimated from weekends, and school and public holidays.

The "percent reported" column is the ratio of the number of logsheets received and expected. Use the reciprocal of this percentage to estimate an annual total. Example: the estimated attendance at Waimea = (1/93.7%) \* 852,261 = 909,564.

°Attendance is based on headcounts taken 3 times by Water Safety Officers during an 8-hour workday.



Summary of lifeguard logsheet data, from the City and County of Honolulu, 2002.

Beach park	# Logs received	# Logs expected*	Percent reported <sup>o</sup>	Attendance@	Finctaid-minor	rastaid-reports	Rescues	Dromkgs	Prey. actions	Surfing accidents	Lost children
ALA MOANA	1,816	1,825	99.5	1,756,022	4,962	90	64	2	21,015	20	21
ALH/HALEIWA	352	365	96.4	400,717	1,669	17	29		9,652	9	3
BELLOWS	109	117	93.2	114,547	1,127	1	5		2,330	1	
EHUKAI	364	365	99.7	484,381	1,025	58	39		11,473	49	1
HANAUMA	583	624	93.4	1,751,318	23,430	97	379	10	38,643	4	8
KAILUA	364	365	99.7	368,722	1,871	16	13		5,700	2	4
KEAUWAULA	365	365	100.0	130,324	762	34	31		11,181	17	
KEWAENA	364	365	99.7	272,955	853	17	10		10,067	12	
KUALOA	153	171	89.5	268,825	752	1	4		4,369		1
MAILI	718	730	98.4	376,903	1,569	28	21		20,324	11	
MAKAHA	711	730	97.4	348,581	2,327	30	59		22,518	21	
MAKAPUU	364	365	99.7	208,681	3,771	12	127	1	25,462	4	
NANAKULI	899	930	96.7	318,929	2,302	25	50		16,678	4	
POKAI BAY	723	730	99.0	370,673	1,851	24	13		13,813		I
SANDY	714	730	97.8	602,539	5,127	104	277		60,917	57	I
SUNSET	364	365	99.7	553,178	1,005	22	37		11,823	12	I
WAIKIKI	2,548	2,555	99.7	8,355,448	30,163	553	119		62,515	283	346
WAIMANALO	506	521	112.7	297,141	3,372	21	12		12,615	10	
WAIMEA	360	365	98.6	837,222	1,593	54	99		16,600	23	1
ALL BEACHES	12,377	12,583	98.4	17,817,106	89,531	1,204	1,388	13	377,695	539	388

\*The number of expected logsheets was computed differently, depending on the beach. For most beaches, this number was 365 times the number of stations (e.g. Ala Moana = 365 days \* 5 stations = 1,825). For Hanauma, the expected number was 312 for each station (624 total), since this beach is closed each Tuesday. Bellows was usually only guarded on weekends and holidays (expected=117), and Kualoa on weekends and throughout the June-August period (expected=196). The number of logs expected from Nanakuli was estimated from weekends, and school and public holidays. One tower at Waimanalo was staffed only on Fridays, Saturdays and Sundays, and holidays.

<sup>o</sup>The "percent reported" column is the ratio of the number of logsheets received and expected. Use the reciprocal of this percentage to estimate an annual total. Example: the estimated attendance at Waimea = (1/98.6%) \* 873,222 = 849,110.

@Attendance is based on headcounts taken 3 times by Water Safety Officers during an 8-hour workday.

**Summary of lifeguard logsheet data, from the City and County of Honolulu, 2001.**

<b>Beach park</b>	<b># Logs received</b>	<b># Logs expected*</b>	<b>Percent reported"</b>	<b>Attendance@</b>	<b>%staid-minor</b>	<b>Firgaid-reports</b>	<b>Rescues</b>	<b>Drowthigs</b>	<b>Prey. actions</b>	<b>Surfing axidenis</b>	<b>Lost children</b>
ALA MOANA	1,811	1,825	99.2	1,827,371	4,224	118	76		19,995	28	55
ALII/HALEIWA	357	365	97.8	378,121	1,510	20	44		9,993	12	1
BELLOWS	116	117	99.1	111,523	564	3	2		1,570	2	
EHUKAI	357	365	97.8	488,747	1,052	63	46	0	11,860	51	
HANAUMA	601	624	96.3	1,526,835	26,362	65	357	2	35,812		<b>12</b>
KAILUA	364	365	99.7	412,753	1,307	15	9	1	5,573	2	<b>1</b>
KEAUWAULA	360	365	98.6	129,398	1,087	37	21		8,796	16	
KEWAENA	364	365	99.7	251,266	1,119	12	8		9,531	7	
KUALOA	164	171	95.9	325,064	1,000	1	7		4,728		
MAILI	696	730	95.3	316,007	3,016	27	23		20,233	15	
MA1CAHA	728	730	99.7	375,762	2,032	42	41		29,688	18	
MAICAPUU	365	365	100.0	209,975	3,412	12	155		30,478	4	
NANAKULI	913	930	98.2	345,006	2,869	31	47		20,133	6	
POKAI BAY	631	730	86.4	348,192	1,723	35	8		14,135		
SANDY	681	730	93.3	611,665	5,496	81	277		63,061	50	
SUNSET	365	365	100.0	603,314	1,139	21	46	0	12,159	9	
WALKIICI	2,548	2,555	99.7	9,259,938	30,194	709	97	1	78,087	343	535
WAIMANALO	448	449	99.8	315,072	2,924	12	8		11,971	9	
WA1MEA	351	365	96.2	873,545	1,687	44	88		14,907	19	3
ALL BEACHES	12,220	12,511	97.7	18,709,554	92,717	1,348	1,360	4	402,710	591	607

\*The number of expected logsheets was computed differently, depending on the beach. For most beaches, this number was 365 times the number of stations (e.g. Ala Moans = 365 days \* 5 stations = 1,825). For Hanauma, the expected number was 3 12 for each station (624 total), since this beach is closed each Tuesday. Bellows was usually only guarded on weekends and holidays (expected=117), and Kualoa on weekends and throughout the June-August period (expected=196). The number of logs expected from Nanakuli was estimated from weekends, and school and public holidays. One tower at Waimanalo was staffed only on Fridays, Saturdays and Sundays, for the June-December period.

"The "percent reported" column is the ratio of the number of logsheets received and expected. Use the reciprocal of this percentage to estimate an annual total. Example: the estimated attendance at Waimea = (1/96.2%) \* 873,545 = 908,051.

@ Attendance is based on headcounts taken 3 times by Water Safety Officers during an 8-hour workday.

Summary of lifeguard logsheet data, from the City and County of Honolulu: 2000.

Beach park	# Logs received	ft Logs expected*	Percent reported'	Attendance	staid-minor	Firstaid-reports	Rescues	Thownings	Preventive actions	Surfing accidents	Lost children
ALA MOANA	1,820	1,830	99.5	1,743,915	8,612	79	70		18,506	17	5
ALE/HALMWA	365	366	99.7	320,549	1,315	27	33		11,969	13	
BELLOWS	76	76	100.0	82,695	401	2	1		614		
EHUKAI	360	366	98.4	452,628	1,141	58	51		13,779	44	
HAN AUMA	618	628	98.4	1,691,057	23,543	77	318	1	29,732		14
KAILUA	364	366	99.5	408,152	1,812	6	3	1	5,243		2
KEAUWAULA	366	366	100.0	137,021	969	34	27		8,942	22	
KEWAENA	337	366	92.1	236,183	875	11	3		8,752	8	
KUALOA	130	130	100.0	131,535	488	4	5		3,308		
MAILI	695	730	95.2	336,092	2,231	11	16		37,387	3	
MAKAHA	693	724	95.7	454,932	3,047	52	22		37,595	33	
MAKAPUU	364	366	99.5	198,790	1,800	16	59	1	23,646	11	
NANAKULI	889	918	96.8	309,857	2,584	20	53		23,912	6	1
POKAI BAY	720	730	98.6	363,942	2,023	17	12		11,711	1	
SANDY	704	708	99.4	547,994	5,338	102	184		60,295	67	
SUNSET	360	366	98.4	672,273	1,000	34	39		12,112	14	
WAIKIKI	2,551	2,562	99.6	8,205,039	38,185	769	141	4	78,362	424	786
WAIMANALO	357	366	97.5	273,846	2,865	14	7		5,494	8	1
WAIKOLE	360	366	98.4	719,310	1,341	49	117		18,172	26	1
ALL BEACHES	12,129	12,330	98.4	17,285,810	99,570	1,382	1,161	7	409,531	697	810

\*The number of expected logsheets *was* computed differently, depending on the beach. For most beaches, this number was 366 (2000 was a leap year) multiplied by the number of stations (e.g. Ala Moana = 366 days \* 5 stations = 1,830). For Hanauma, the expected number was 314 for each station (628 total), since this beach is closed on Tuesdays, Bellows was usually only guarded on weekends, and Kualoa on weekends and throughout the June-August period. Further adjustments were made for days on which a particular beach was known to be closed, due to shortage of personnel or damage to lifeguard towers.

The "percent reported" column is the ratio of the number of logsheets received and expected. Use the reciprocal of this percentage to estimate an annual to tat. Example: the estimated attendance at Waimea = (1198.4) \* 719,310 = 731,006.

**Summary of lifeguard logsheet data, from the City and County of Honolulu: 1999.**

<b>Beach park</b>	<b># Logs received</b>	<b># Logs expected*</b>	<b>Percent reported'</b>	<b>Attendance</b>	<b>Fostaid-minor</b>	<b>fIRSTAID-reports</b>	<b>Rescues</b>	<b>Drowninfp</b>	<b>Prey. actions</b>	<b>Surfing accidents</b>	<b>Lost children</b>
ALA MOANA	1808	1825	99.1	1,451,829	9105	69	47	1	20,267	14	7
ALII/HALEIWA	354	365	97.0	326,817	752	16	24		12,244	6	
BELLOWS	108	104	103.8	145,834	1788	5	5		2,184	2	1
EHUKAI	353	365	96.7	445,098	1238	51	56	1	15,426	39	
HANAUMA	615	626	98.2	2,307,994	33709	94	141	2	37,354		10
KAILUA	363	365	99.5	461,377	2875	2	2		8,815		
KEAUWAULA	319	365	87.4	133,833	584	31	9		11,578	17	
KEWAENA	355	365	97.3	299,051	696	12	5		9,462	9	
KUALOA	166	196	84.7	152,911	519	1	2		3,739	1	
MAILI	660	730	90.4	340,395	1349	25	21		17,276	13	1
MAKAHA	664	730	91.0	389,145	1412	30	26		23,547	12	1
MAKAPUU	363	365	99.5	208,383	1897	19	55		28,636	10	
NANAKULI	660	730	90.4	303,058	<b>1067</b>	19	5		19,770	2	
POKAI BAY	636	730	87.1	408,191	1362	18	9		18,165		3
SANDY	708	730	97.0	515,570	5942	78	135		60,370	46	
SUNSET	351	365	96.2	691,227	418	11	37		9,563	5	
WAIKIKI	2536	2555	99.3	7,409,535	35139	397	128		60,875	200	777
WAIMANALO	365	365	100.0	249,318	3137	9	6		5,205	3	1
WAIMEA	337	365	92.3	704,921	1265	33	97		16,269	15	
ALL BEACHES	11,721	12,241	95.8	16,944,487	104,254	920	810	4	380,745	394	801

\*The number of expected logsheets was computed differently, depending on the beach. For most beaches, this number was 365 times the number of stations (e.g. Ala Moana = 365 days \* 5 stations = 1,825). For Hanauma, the expected number was 313 for each station (626 total), since this beach is closed each Tuesday. Bellows was usually only guarded on weekends (expected=104), and Kualoa on weekends and throughout the June-August period (expected=196).

The "percent reported" column is the ratio of the number of logsheets received and expected. Use the reciprocal of this percentage to estimate an annual total. Example: the estimated attendance at Waimea = (1/92.3) \* 704,921 = 763,728.

@ Attendance is based on headcounts taken 3 times by Water Safety Officers during an 8-hour workday.

**Summary of lifeguard logsheet data, from the City and County of Honolulu: 1998.**

<b>Beach park</b>	<b># Logs received</b>	<b># Logs expected*</b>	<b>Percent reported"</b>	<b>Attendance</b>	<b>Frstaid-niior</b>	<b>Fast aid-reports</b>	<b>Rescues</b>	<b>Drowlings</b>	<b>Prey. actions</b>	<b>Surfing accidents</b>	<b>Lost children</b>
ALA MOANA	1,809	1,825	99.1	1,329,153	5,565	63	45		20,238	11	11
ALII/HALEIWA	364	365	99.7	323,811	880	19	39		14,593	6	1
BELLOWS	96	104	92.3	86,965	1,162	4	1		1,874		1
EHUKAI	358	365	98.1	516,865	1,355	59	73		15,751	47	
HANAUMA	683	686	99.6	2,501,335	25,895	140	228	2	44,039		41
KAILUA	364	365	99.7	468,081	2,097	11	4		6,337	1	3
KEAUWAULA	351	365	96.2	165,836	784	36	20		11,534	13	1
KEWAENA	362	365	99.2	333,525	996	14	13		11,528	11	
KUALOA	164	171	95.9	175,109	787	1	6		4,204		
MAILI	696	730	95.3	324,868	1,069	16	31		16,219	3	1
MAKAHA	701	730	96.0	444,325	1,477	36	23		22,837	10	
MAKAPUU	363	365	99.5	232,064	1,632	25	48	1	25,800	3	
NANAKULI	863	930	92.8	412,327	1,627	21	36		23,939	4	
POKAI BAY	710	730	97.3	474,623	1,670	19	9	1	19,477	3	1
SANDY	718	730	98.4	623,595	5,958	100	104		49,259	36	
SUNSET	364	365	99.7	640,201	444	15	45		9,354	9	
WAIKIKI	2,540	2,555	99.4	7,081,807	27,547	487	160		69,738	195	579
WAIMANALO	364	365	99.7	258,016	3,070	18	10		5,499	3	
WAIMEA	356	365	97.5	899,592	1,629	38	174		22,119	16	2
<b>ALL BEACHES</b>	<b>12,226</b>	<b>12,476</b>	<b>98.0</b>	<b>17,292,098</b>	<b>85,644</b>	<b>1122</b>	<b>1,069</b>	<b>4</b>	<b>394,339</b>	<b>371</b>	<b>641</b>

\*The number of expected logsheets was computed differently, depending on the beach. For most beaches, this number was 365 times the number of stations (e.g. Ala Moana = 365 days \* 5 stations = 1,825). For Hanauma, the expected number was 343 for each station (686 total), since this beach was closed each Tuesday, starting in August, 1998. Bellows was usually only guarded on weekends (expected=104), and Kualoa on weekends and throughout the June 6-September 7 period (expected=171). The number of logs expected from Nanakuli was estimated from weekends, and school and public holidays.

"The "percent reported" column is the ratio of the number of logsheets received and expected. Use the reciprocal of this percentage to estimate an annual total. Example: the estimated attendance at Waimea = (1/97.5) \* 899,592 = 922,658.

@ Attendance is based on headcounts taken 3 times by Water Safety Officers during an 8-hour workday.

**Summary of lifeguard logsheet data, from the City and County of Honolulu: 1997.**

Beach park	# Logs received	# Logs expected*	Percent reported'	Attendance®	J1rstaid-minor	firstaid-reports	Rescues	Dmwnings	Prey. actions	Surfing accidents
ALA MOANA	1,734	1,825	95.0	1,598,405	2,908	77	38	2	10,801	16
ALH/HALEIWA	363	365	99.5	440,407	1,520	16	40		11,358	15
BELLOWS	99	104	95.2	101,829	1,480	6	3		2,082	
EHUICAI	365	365	100.0	744,768	1,277	78	62	1	14,555	67
HANAUMA	716	730	98.1	2,207,953	21,638	85	231	2	44,820	1
KAILUA	361	365	98.9	579,719	1,960	13	6		5,801	
KEAUWAULA	353	365	96.7	229,911	874	39	14		12,338	12
KEWAENA	363	365	99.5	344,628	867	16	8	1	11,567	11
KUALOA	101	104	97.1	115,506	643	3	2		2,383	
MAILI	687	730	94.1	409,269	1,302	23	41		13,669	17
MAKAHA	692	730	94.8	573,394	1,549	31	25		22,790	16
MAKAPUU	359	365	98.4	197,840	1,925	15	76		15,395	5
NANAKULI	885	930	95.2	617,153	2,109	36	60		24,983	12
POKAI BAY	686	730	94.0	604,243	1,894	22	18		18,239	3
SANDY	716	730	98.1	514,349	4,636	121	175	1	44,882	51
SUNSET	363	365	99.5	716,912	467	35	47		9,958	19
WAIKIKI	2,540	2,555	99.4	9,522,939	22,982	344	212	1	50,883	129
WAIMANALO	360	365	98.6	231,500	2,937	24	13		5,954	4
WAIMEA	360	365	98.6	884,776	1,008	51	119		14,755	27
ALL BEACHES	12,103	12,453	97.2	20,635,501	73976	1035	1190	8	337,213	405

\*The number of expected logsheets was computed differently, depending on the beach. For most beaches, this number was 365 times the number of stations (e.g. Ala Moana = 365 days \* 5 stations = 1,825). Bellows and Kualoa were only guarded on weekends (expected=104), and the number of logs expected from Nanakuli was estimated from weekends, and school and public holidays.

The "percent reported" column is the ratio of the number of logsheets received and expected. Use the reciprocal of this percentage to estimate an annual total. Example: the estimated attendance at Waimea = (1/98.6) \* 884,776 = 897,339.

@Attendance is based on headcounts taken 5 times by Water Safety Officers during an 8-hour workday.

OCEAN SAFETY AND  
LIFEGUARD  
SERVICE  
DIVISION  
CITY  
AND  
COUNTY  
OF  
HONOLULU

STATISTICAL SUMMARIES 1/01/97 - 12/31/97

Event=	Ala Moana	Walloki	Hana.nra	Sandy	Makapuu	Nai'anai	Beilous	Kakta	Kuaioa	Sunset	Ehurai	Kewaena	Waimea	AR	Manakui	Depot	Mai	POICai	Lilakahra	Yoknharna	Tab*:	
Atiendanos	1601313	9536234	2207953	514349	198115	231500	101829	579719	115506	716912	744768	34,628	884776	440407	513573	107700	409269	605453	574024	230476	20658604	
Preventions	10829	51062	44820	44882	15415	5954	2082	5801	1183	9958	14555	11567	14755	11358	19954	5519	156/3	18314	22875	124.34	3.38z1E	
First Aid One	2912	23049	216223	4636	1930	2937	1480	1960	643	467	1277	867	1008.	1520	1523	491	1302	1911	15;	879	74083	
Public Contact	41674	92924	78923	59817	21816	10220	4783	956	4435	21611	25600	17282	18542	14325	27885	6984	18286	26985	29031	15486	546575	
Rescues	80	348	231	175	76	13	3	6	2	47	62	8	121	99	27	58	41	18		14	1454	
Vitality	1152	3004	27	0	12	36	7	5	20	1	1	1	66	719	3621	500	1329	3757	2592	1917	18347	
Prescues	0	0	0	0	0	0	0	0	0	0	0	0	0	0	0	0	0	0	0	0	0	
First Aid Report	77	344	85	121	15	24	6	13	3	35	78	16	51	16	22	14	23	23	31	41	1038	
Resuscitation	4	8	6	2	0	0	0	1	0	0	1	0	1	1	0	0	0	0	1	0	25	
Drowning	2	1	2	1	0	0	0	0	0	0	1	10	0	0	0	0	0	0	0	0	3	
Surfing Attractions	16	129	1	51	5	4	0	0	0	19	67	11	27	15	6	6	17	3	16	12	405	
Scusa	0	2	1	1	0	0	0	0	0	0	0	1	0	0	0	0	0	0	0	0	5	
Jumping/Diving	1	12	2	1	0	0	0	1	0	0	0	0	2	0	3	2	0	5	1	1	31	
IR9	1	6	0	1	0	0	0	0	0	0	0	0	0	1	10	0	1	2	8	20	129	
Arrestance	2571		2032		1		4	3	0	10		3	15	2	7	6	5	5		10	24.8	
Fire	47		54		0	0	1	2	0	1	2	2	4	2	6	4	2	0		24	52	
Motorboat	2	0	0	0	0	0	0	1	0	0	1	0	2	0	1	0	0.1	0	0	2	9	
Potice	16	113	35		13		1	5	0	7	4	3	14	1	41	23	451	51		6	79	480
Lost	29	5.39	170		0	0	0	2	0	0	0	0	3	0	5	1				11	6	
ATV	0	0	0	0	0	0	0	0	0	0	2	0	0	0	0	0	0	13	0	0	2	
Jet Ski	0	6	0	2	0	0	0	0	0	5	1	0	0	0	16	0	6			8	5	132





DEPARTMENT OF PARKS AND RECREATION OCEAN SAFETY DIVISION STATISTICAL ACTIVITIES REPORT OAHU  
 BEACHES 01/01/96 - 1 / 1/96

BEACH/MONTH	Attendance	Violation	Prevent	1st Aid	Public contact	Rescue	1st Report	Resusci	Drown	Sudo=	Scuba	Jump/dive	Armbu	Fire	Hell	Police	Lost	ATV	Jet sl	
<b>ALA MOANA</b>																				
<b>TOTAL Ala Moana</b>	<b>1601162</b>	<b>1905</b>	<b>18527</b>	<b>4443</b>	<b>47075</b>	<b>260</b>	<b>145</b>	<b>6</b>	<b>0</b>	<b>16</b>	<b>0</b>	<b>1</b>	<b>41</b>	<b>1</b>	<b>0</b>	<b>37</b>	<b>126</b>	<b>0</b>	<b>10</b>	
<b>WAIKIKI</b>																				
<b>TOTAL WAIKIKI</b>	<b>7882618</b>	<b>3349</b>	<b>35541</b>	<b>17551</b>	<b>76342</b>	<b>529</b>	<b>331</b>	<b>5</b>	<b>0</b>	<b>114</b>	<b>1</b>	<b>11</b>	<b>70</b>	<b>3</b>	<b>6</b>	<b>102</b>	<b>897</b>	<b>1</b>		
HANAUMA	1900007	169	34239	11680	54370	164	89	4	1	0	0	3	35	3	2	5	3	0		
SANDY	644645	5	33415	4202	49740	122	96	2	1	45	0	0	23	2	0	5	0	1		
MAKAPUU	299287	170	15676	1661	22217	45	24	0	0	8	0	0	7	0	0	1	0	0		
WAIMANALO	298798	20	6754	2223	11963	24	21	0	1	4	0	3	9	0	0	3	0	0		
BELLOWS	113598	1	1057	782	2341	9	3	0	0	0	0	0	1	1	0	0	0	0		
KAILUA	505027	55	6075	1757	12450	38	14	0	0	2	0	0	3	0	0	0	0	0		
KUALOA	149403	41	1944	693	3413	3	2	0	0	1	0	0	0	0	0	0	0	0		
<b>TOTAL WINDWARD</b>	<b>3910765</b>	<b>461</b>	<b>99160</b>	<b>22998</b>	<b>156494</b>	<b>405</b>	<b>249</b>	<b>6</b>	<b>3</b>	<b>60</b>	<b>0</b>	<b>6</b>	<b>78</b>	<b>6</b>	<b>2</b>	<b>14</b>	<b>3</b>	<b>1</b>		
SUNSET	638512	59	9730	543	16998	31	33	0	0	13	0	1	6	0	0	3	0	0		
EHUKAI	551375	67	11685	1316	16177	28	43	0	0	22	1	0	6	2	0	5	5	0		
KE WAENA	370431	34	9008	996	15360	23	19	0	0	11	0	1	3	0	0	0	0	0		
WAIMEA	708485	35	11312	1050	16466	93	34	0	0	11	0	1	5	2	0	4	0	0	1	
ALII	390115	62	9344	1185	12478	40	22	0	0	7	0	1	7	2	0	2	0	0		
<b>TOTAL NORTH SHORE</b>	<b>2658918</b>	<b>257</b>	<b>51079</b>	<b>5090</b>	<b>77479</b>	<b>215</b>	<b>151</b>	<b>0</b>	<b>0</b>	<b>64</b>	<b>1</b>	<b>4</b>	<b>27</b>	<b>6</b>	<b>0</b>	<b>14</b>	<b>5</b>	<b>0</b>	<b>2</b>	
NANAKULI	519591	88	15721	1547	22557	25	19	1	0	3	0	0	7	3	2	2	0	0	1	
DEPOTS	269746	50	6269	1240	9282	33	17	0	0	1	0	0	4	1	0	3	0	0		
MAILI	615925	165	23475	3155	29753	52	53	0	0	13	0	1	11	2	0	3	5	1		
POKA1 BAY	596239	188	23129	2342	29126	110	35	0	0	8	0	3	10	0	0	2	1	0		
MAKAHA	619472	288	19778	3575	27341	100	32	0	0	8	0	0	7	2	1	7	0	3		
KEAUWAULA	294677	94	8409	1272	11824	19	20	0	0	6	0	1	3	1	0	1	0	0		
<b>LEEWARD TOTAL</b>	<b>2915650</b>	<b>873</b>	<b>96781</b>	<b>13131</b>	<b>129883</b>	<b>339</b>	<b>176</b>	<b>1</b>	<b>0</b>	<b>39</b>	<b>0</b>	<b>5</b>	<b>42</b>	<b>9</b>	<b>3</b>	<b>18</b>	<b>6</b>	<b>4</b>	<b>2</b>	
<b>GRAND TOTAL</b>	<b>18969113</b>	<b>6845</b>	<b>301088</b>	<b>63213</b>	<b>487273</b>	<b>1748</b>	<b>1052</b>	<b>18</b>	<b>3</b>	<b>293</b>	<b>2</b>	<b>27</b>	<b>258</b>	<b>25</b>	<b>11</b>	<b>185</b>	<b>1037</b>	<b>6</b>	<b>6</b>	

**DEPARTMENT OF PARKS AND RECREATION WATER SAFETY DIVISION STATISTICAL  
ACTIVITIES REPORT  
01/01/95 - 12/31/95**

Reach	Attendance	Violation	Prevent	minor 4stAd	Pcontact	Rescue	istAid report	Resusci	Siufacc,	Scuba	SumpidiVe	Jet ski	Ambu	Fire	Heli	Police	Lost child	Drown
ALA MOANA	1353530	283	10377	2792	44033	56	88	5	4	1	0	0	25	2	2	10	25	0
WAIKIKI	6951083	153	18034	13182	51399	133	235	11	56	8	8	2	45	6	0	11	37	2
HANAUMA	1722851	0	34792	14599	61295	148	89	3	8	1	1	1	19	7	0	1	0	1
SANDY	403995	141	33968	5082	48120	114	84	3	41	7	9	0	21	3	0	3	1	0
MAKAPUU	276896	140	17217	1698	25730	24	11	2	3	0	1	0	6	2	0	3	0	0
BELLOWS	83317	0	1282	792	2606	7	3	0	0	0	0	0	1	0	0	0	0	0
KAILUA	616513	0	4123	961	10090	10	6	0	1	0	0	0	2	2	0	1	0	1
KUALOA	217086	0	1769	557	3531	7	4	1	1	0	0	0	2	2	0	1	0	0
WAIMANALO	199534	0	2477	1876	6141	22	15	1	6	1	0	0	8	1	0	2	0	0
SUNSET	552496	0	5933	215	13160	19	18	1	8	2	0	3	9	4	1	5	0	0
EHUKAI	933645	1	6806	1029	10710	31	38	1	20	7	7	10	9	0	0	0	0	0
KE WAENA	174424	0	4371	433	9829	10	7	0	5	4	1	9	2	4	1	0	0	1
WAIMEA	700593	5	8893	814	10624	100	34	2	14	3	3	35	15	5	4	16	0	1
ALI!	239492	0	6404	700	8820	30	15	0	6	0	0	2	6	1	0	4	0	0
<u>N A N A K U L I</u>	461711	35	12900	1264	18008	50	27	1	3	0	4	5	6	0	0	6	1	0
<u>M A I L I</u>	387839	23	8512	1016	12958	22	35	2	0	0	0	0	9	2	0	6	0	0
POKAI BAY	545803	18	10314	1206	16182	26	19	1	0	0	0	0	1	0	0	0	0	0
<u>M A K A H A</u>	458578	27	11050	1214	15978	70	32	0	11	4	8	6	4	0	0	4	1	0
KEAUWAULA	227973	6	7798	818	10235	43	28	1	6	7	21	6	15	1	0	5	0	0
<b>TOTAL</b>	<b>16507359</b>	<b>832</b>	<b>207020</b>	<b>50248</b>	<b>379449</b>	<b>922</b>	<b>788</b>	<b>35,</b>	<b>193</b>	<b>45</b>	<b>63</b>	<b>79</b>	<b>205</b>	<b>42</b>	<b>8</b>	<b>78</b>	<b>65</b>	<b>6</b>

DEPARTMENT OF PARKS AND RECREATION

WATER SAFETY DIVISION STATISTICAL ACTIVITIES REPORT

01/01/94 - 12/31/94

Beach Area	Percentage			Total Attendance	Vio.	Prevent Action	1st Aid Minor	Public Contact	Rescue	1st Aid			Surf Acc.	Scuba Acc.	Jump/Dive Acc.	Assist:				Lost Child	
	Sun	Swim	Surf							Report	Resusci.	Drown				SKI	Ambu.	Fire	Heli		Police
ALA MOANA	59%	33%	8%	1453605	535	12975	3501	47782	77	74	3	0	11	1	3	3	37	0	0	10	4
WAIKIKI	7%	16%	8%	7075251	151	17231	13959	46604	97	159	4	1	47	0	15	16	60	1	0	11	24
HANAUMA	75%	25%	0%	1933915	23	21018	13756	40476	231	74	6	1	1	0	2	6	18	3	1	3	3
SANDY	5%	18%	3%	531967	88	35583	2593	40829	237	100	0	0	57	2	0	1	22	3	0	11	0
MAKAPUU	5%	18%	2%	266966	0	22589	1658	29612	112	20	1	1	14	0	1	0	3	0	0	3	0
BELLOWS	6%	20%	1%	140855	0	2500	921	3555	19	3	0	0	2	0	0	0	2	0	0	1	0
KAILUA	8%	15%	4%	778216	1	1717	993	8227	5	6	1	0	1	0	0	0	1	0	0	0	0
KUALOA	8%	14%	1%	155484	0	796	253	1683	2	1	0	0	0	0	1	0	0	0	0	0	0
WAIMANALO	5%	22%	2%	254922	39	6342	4185	12484	7	4	1	1	2	0	0	0	3	1	0	2	0
SUNSET	7%	16%	1%	480202	0	4510	240	8574	16	13	0	0	6	0	0	2	6	4	1	8	0
EHUKAI	6%	10%	3%	290799	10	4559	532	9709	34	32	0	0	27	0	0	3	4	0	0	2	0
KE WAENA	6%	11%	2%	169635	25	4510	617	9532	11	8	0	0	4	0	0	0	4	1	1	1	0
WAI MEA	8%	18%	1%	642332	27	7124	940	8925	80	34	0	1	19	0	4	7	17	4	1	3	0
ALII	6%	18%	1%	252708	0	4842	731	7594	21	6	0	0	5	0	0	1	0	0	0	0	0
NANAKULI	7%	27%	3%	597968	59	11615	1511	21101	38	23	0	0	7	0	1	0	5	1	0	6	0
MAILI	6%	26%	9%	408308	8	9967	1095	12273	19	25	0	0	6	0	0	0	5	1	0	3	0
POKAI BAY	6%	3%	2%	632286	17	10186	1292	18403	8	13	1	0	1	0	6	0	8	1	0	2	3
MAKAHA	6%	24%	1%	473371	19	10236	1258	13421	16	23	0	0	13	0	0	1	3	1	0	3	0
KEAUWAULA	5%	16%	0%	304937	0	8432	631	9314	10	12	0	0	10	3	0	0	2	2	1	1	0
***Total	7%	20%	9%	16843727	1002	196732	50666	350098	1040	630	17	5	233	6	33	40	200	23	5	70	34

DEPARTMENT OF PARKS AND RECREATION  
WATER SAFETY DIVISION STATISTICAL ACTIVITIES REPORT  
01/01/93 - 12/31/93

Beach Area	Percentage			Total Attendance	Viol.	Prevent Action	1st Aid Minor	Public Contact	1st Aid			Surf Acc.	Scuba Acc.	Jump/Dive ACC.	Assist:				Lost Child		
	Sun	Swim	Surf						Rescue	Report	Resusci.				Drown	SKI	Ambu.	Fire		'Jeri	Police
ALA MOANA	5%	3%	8%	1486550	410	17717	3700	47338	88	65	6	0	20'	1	4	2	34	0	1	24	11
WAIKIKI	7%	1%	8%	7107401	103	21031	15238	46816	111	126	5	0	39	1	6	14	59	2	0	21	7
HANAUMA	7%	2%	0%	2356288	6	21735	13747	44999	113	58	3	0	4	2	3	0	29	3	2	8	0
SANDY	5%	1%	3%	634874	94	42529	4224	52326	173	92	1	1	71	1	0	0	21	3	1	6	0
MAKAPUU	5%	1%	2%	320757	8	17936	3301	22961	86	29	0	0	17	0	1	0	8	2	1	2	0
WAIMANALO	6%	1%	1%	837324	0	14910	7635	22209	7	9	0	0	3	0	2	0	5	0	0	1	0
BELLOWS	6%	1%	1%	249402	0	1855	840	3297	3	2	0	0	1	0	0	0	0	0	0	0	0
KAILUA	8%	1%	0%	956837	2	2975	1151	8981	8	12	0	0	4	0	0	0	6	2	0	2	0
KUALOA	8%	1%	4%	65984	0	367	197	828	4	0	0	0	0	0	0	0	0	0	0	0	0
SUNSET	7%	1%	1%	422389	0	4341	178	8679	31	14	2	0	10	0	0	5	3	1	1	2	0
EHUKAI	6%	9%	2%	305935	0	5620	811	10155	31	37	0	0	31	0	1	4	2	0	0	0	0
KEWAENA	5%	10%	3%	145993	0	4243	490	8609	7	4	0	0	4	-	0	0	0	0	0	0	0
WAIMEA	8%	1%	1%	635683	3	6958	879	10404	96	37	1	0	20	0	7	2	20	5	4	9	0
ALII	6%	1%	1%	277193	0	4745	732	8002	10	11	0	0	8	0	0	0	1	0	0	0	0
NANAKULI	6%	3%	4%	371570	0	7259	909	17253	34	19	0	0	7	0	1	2	5	2	0	6	0
HAILI	6%	2%	1%	250944	30	7052	770	10009	25	10	1	0	5	0	1	0	4	1	1	5	0
POKAI BAY	6%	2%	2%	548743	27	7824	1181	16988	7	9	0	0	0	3	1	5	2	2	0	4	6
MAKAHA	5%	2%	2%	333650	7	6612	740	8864	2	5	0	0	1	0	0	0	2	3	0	4	1
KEAUWAULA	6%	2%	1%	240483	5	7901	352	8857	13	27	1	0	19	0	0	2	5	1	3	9	0
***Total	7%	1%	9%	17548000	695	203610	57075	357575	849	566	20	1	264	8	27	36	206	27	14	103	25

DEPARTMENT OF PARRS AND RECREATION  
WATER SAFETY DIVISION STATISTICAL ACTIVITIES REPORT  
01/01/92 - 12/31/92

Beach Area	Percentage			Total Attendance	Vio.	Prevent Action	1st Aid Minor	Public Contact	1st Aid				Surf Acc.	Scuba Acc.	Jump/Dive Acc.	Assist:				Lost Child	
	Sun	Swim	Surf						Rescue	Report	Resusci.	Drown				IRB	Ambu.	Fire	Heti		Police
ALA MOANA	59%	34%	7%	1483070	501	22878	3245	46356	126	73	4	1	11	0	0	0	32	2	0	38	21
WAIKIKI	81%	13%	6%	9227226	251	26231	17345	50359	73	158	20	0	45	0	7	9	79	4	0	27	13
HANAUMA	81%	19%	0%	2290202	4	11195	11443	40997	129	39	3	1	2	0	0	0	25	2	0	6	0
SANDY	60%	13%	27%	641001	5	47620	2693	55714	166	59	2	0	57	1	2	0	28	4	0	6	0
MAKAPUU	51%	16%	33%	346282	7	26997	2174	31989	102	46	0	0	37	0	0	0	17	8	0	3	0
BELLOWS	54%	29%	17%	58519	1	938	1038	1761	0	1	0	0	0	0	0	0	0	0	0	0	0
KAILUA	77%	18%	5%	498955	29	3566	2280	9183	8	7	0	0	3	0	0	0	3	3	1	2	0
KUALOA	73%	26%	1%	31400	1	976	290	1357	0	1	0	0	0	0	0	0	0	0	0	0	0
SUNSET	70%	16%	14%	391824	8	3985	145	8207	21	7	0	0	4	0	0	0	1	1	0	1	0
EHUKAI	65%	10%	26%	284604	0	4965	477	9789	36	45	2	1	34	0	0	0	12	3	2	3	0
KE WAENA	63%	9%	28%	199334	0	5621	526	10508	5	6	1	0	5	0	0	0	2	2	0	2	0
WAIMEA	82%	17%	1%	597331	37	5674	802	9155	130	61	1	0	34	0	7	0	25	4	4	9	4
ALIT	71%	17%	13%	257752	4	5074	863	9595	35	6	0	0	4	0	0	0	1	0	0	0	0
NANAKULI	63%	33%	5%	420776	3	9732	2077	19557	72	26	0	0	7	0	1	0	3	0	0	9	3
MAILI	60%	30%	10%	238071	2	5336	749	7782	27	11	0	0	4	0	0	0	1	2	0	5	0
POKAI BAY	62%	38%	0%	444383	31	7169	1646	15617	28	13	11	0	0	0	3	0	6	0	0	0	4
HAKAHA	54%	23%	23%	362691	9	6294	1172	8834	33	17	0	0	13	0	0	0	1	0	0	3	4
*"Total	75%	17%	8%	1113121	893	194251	48965	336760	991	576	44	3	260	0	20	9	236	35	7	114	49

DEPARTMENT OF PARKS AND RECREATION  
 WATER SAFETY DIVISION STATISTICAL ACTIVITIES REPORT  
 11/19/91 - 12/31/91

	Permitage			Total Attendance	Via.	Prevent Action	1st Aid Minor	Public Contact	1st Aid			Surf Acc.	Suba Acc.	Jm/Dive Acc.	Assist/ IRS	Anbu.	Fire	Hen	3.1.1.1	LSS; Chill	
	Sun	Sios	Surf						Resort	Resuscl.	Dro7in										
DANA	58%	33%	1%	1299444	813	19087	3211	41953	56	57	7	0	0	2	29	2			40	45	
Vt	93%	11%	6%	10387791	637	29440	16138	64430	94	148	3	2	47	0	9	49	4	1	45	132	
MA	75%	26%	0%	2091485.	39	16343	11345	32180	77	60	4	1	3	1	1	27	4	4	12	29	
	60%	12%	29%	734903	151	53761	1742	78776	189	92	3	0	52	3	2	32	10	6	12	0	
WI	4%	19%	32%	242560 S		1873 <sup>3</sup>	1694	24450	46	25	0	0	10	0	0	6	3	1	3	0	
We	59%	22%	19%	40570	0	1929	925	6000	1	2	0	0	0	0	0	0	0	0	0	0	
	75%	18%	81	71424	32	4217	2375	7656'	19	11	0	0	0	0	6	4	3	1	3	2	
A	68%	31%	1%	31069	0	1187	274	1623	3	1	0	0	0	0	0	0	0	0	0	0	
l	70%	14%	16%	295299	0	2404	157	6568	21	8	1	1	4	1	1	6	2	1	3	0	
I	63%	9%	28%	270486	1	4794	400	8947	31	23	1	0	23	0	3	9	4	0	3	0	
ENA	61%	12%	27%	193931	4	3884	297	9197	37	7	0	0	5	1	0	1	0	0	0	0	
A	81%	18%	1%	489143	18	5886	561	9207	58	32	0	0	20	0	0	16	5	1	9	3	
	71%	16%	13%	247742	3	5589	1046	9495	12	14	0	0	10	0	0	0	0	0	1	0	
IIII	65%	34%	2%	452087	19	4040	1327	12342	29	15	1	0	2	0	0	4	0	1	4	2	
	59%	28%	14%	207368	5	3586	514	6850	4	7	0	0	2	0	0	2	1	0	5	0	
BAY	60%	40%	1%	422545	20	3460	936	11734	17	9	2	0	0	0	1	4	1	0	2	1	
A	54%	23%	23%	374091	9	3321	796	7329	43	20	0	0	10	0	0	2	0	1	0	2	
tal	761	17%	8%	16580938	1759	187659	43638	335749	737	531	27	4	199	0	21	22	190	39	18	143	-215



93 :2 4w  
S2rf Junicivs  
AC: AC:.  
E:ua  
PC: PC:.

3  
1 u  
; 21  
0 ( :  
Resus7.1.

r 0  
,... .r.  
f. ;  
ft ;  
'...; .2 • t•

0 0 0 1 2 0  
Assist: Lost

IRE Aapu. Fire Mel: Pciice Chill

I 25 2 ' 22 4i  
E 2 4

lc ...  
4. :7:  
0  
0  
0  
E  
-----  
1b

0 3 0 . 0  
0 2 E : 2 3  
0 2 I: 0 2 0

0

23 177 24 3 1=3 267



L') cr. nJ

L'I

te3, 1..4 .\*\*\* 4... 4.... • vi L • L .\*\*\* 14 \*

cu 1. I I 5)L.1 'Ls •

••• •111 EI V' 3 , \*\*\*... tot / C-

.) I\*\*\*. ••• \*\*\*... -2.

••• \*\*\*\*\* ••• ••• o

... 1,1,1 44-4 \* = 4. : : : : U.

7,41  
111

111  
14.  
I i

111 Col:  
.....

4 3 t 3  
4 1 I

A3^ o  
111 it

111 t 1  
111 t  
111 t  
44. 4-4 441 t:111 \*\*\* 1. 444. \*\*\*-7. • /'. • LL /11=-4  
.441

e4 I (Lirsa • =. •Z.1. \*\*\*\*\*  
t...

L = 1 Oa 133 " .  
41. cr. tr. (1+9) C J;  
I I \* \* 4.

Cu 1, 0 Cia re- .1 \* \* . (1 I I I 6' a W. '2); 11jr.)

10 .4.4 .4.1" I J 11" \*4. co; ' 45 15 t. 4. L' \* \* 0. GC. CO I 1.1.1.\*  
1,1 nu i)) (1.5 CU c \* \* \* re) ur en C.) - 0  
Co 444 Cy) 44 \* \* . . . 1 5 . . r' acu

Cy I \* \* \* r 84. L I I L. \* \* 0 I 1.0111  
04. L e i . 1' \* \* . J I r 3 t Y 1 513 CU 444 1.1  
C) < 7. L I 3 F L e i i c 3  
L I 4 \* \* \*  
\* \* \* \* \*

Cl i f) .1 .413 L / 1, 3 L i i : r  
c- Cr) ce- \* \* ( ' J c r s r i n  
c n t r. Cr) u 3 c r. I f) c t s e t) t r. t) o  
L e A \* \* \* \* \*

(:13 o. 4..4 0 j 4.1' \* .7.,. 1- . . . ; L " . . L \* . 1 . . . . Cy) \* , 1- Cr. Cq' Inc.  
E. / . . . . 43 i, j \* \* J , . . . . L. CU 4-4 . . . . I H. 1 " " 41) 1.3 \*  
Cu

\* \* \* \* L' \* \* 4 ( t  
a \* \* \* 131

c's c4'1 t \* \* \* \*  
Cr. I s i c \* \* \* \* \*

Cr 0 1 13 - 3 \* .1 13 C t 3 t O r r  
(13 \* 4.4.1 r \* \* \* \* i 1 CP. \* 1 n C t 3 (73  
L L s) C.) 01 .4-4.1  
c) .42, 1 C J Cr. i i J C')  
E i . 1 C \* \* \* \* c k r Cu

1-1 1  
\* \* \* \*  
1-1 1  
1-1 1  
1-1 1  
1-1 1

1-1 1

\* \* \* \*  
o n e

I i , \* \* \*  
- 4

7 ...

W 41.

.....

(I I C I I)

- 4 4

c a

4 . /

1.1

DEPARTMENT OF PARKS AND RECREATION  
SAFETY DIVISION STATISTICAL REPORT

01/01/89 - 12/31/89

1 10 20  
7 4

LA I  
i  
ttt:

i•

•CJ  
071

CU

rt)

sr)

-4)

t\*• -J-  
CU  
C-  
8.1

•••I Co  
•11• 8414

Cii 4-4 tet tr.t  
« 4

114

C7.●  
1)●●  
CI.I

DEPARTMENT OF PARKS AND RECREATION

WATER SAFETY DIVISION STATISTICAL ACTIVITIES PEPCRT

01/01;88 — 12/31/88

2443527  
15374471

309425942225823524810984431041946456353069224305164675 58909?241439253174167901 542804 428417

LOANA	68%	5%	27%
(IKI	83%	5%	12%
LUMA	77%	0%	23%
LY	64%	a%	28%
WPOU	60%	4%	36%
.OWS	60%	14%	26%
Ul	73%	3%	24%
OA	71%	(%	29%
ET	73%	12%	17%
AI	53%	34%	13%
ENA	61%	22%	17%
E4	enz	1%	21%
	61%	1 <sup>4</sup> %	27%
KULI	65%	5%	30%
	53%	12%	35%
	62%	01!	38%
4A	59%	17%	24%

35217 63698 38499 7045 7890 1920 4779 1357 5776 4755 5450 9446 8046 5375 4971 7166 9644

15	4093	61
173	17607	325
178	17154	58
75	889	68
58	621	27
0	801	5
4	500	7
2	154	4
26	66	7
53	191	28
IS	124	5
118	191	22
23	142	11
22	473	12
33	315	16
6	596	16
17	197	19

Surfing                      Diving                      Lost                      Abu                      Fire                      Hell                      Police  
 kennings Accidents Accidents Children Assist Assist Assist Assist

32	19	2	0	22
194	71	3	0	31
13	22	10	2	16
1	20	5	4	12
0	10	1	0	1
0	2	0	0	1
2	3	1	0	1
0	1	0	0	0
0	3	2	0	2
1	2	1	1	5
0	0	0	0	0
1	5	3	2	2
0	7	4	3	4
0	3	1	0	0
0	5	0	0	3
2	2	1	0	6
0	2	1	0	0

246 177 35 12 106

ch	Percentage		Total	Prevent	Firs; Aid		
3	Sun	Surf	Swia	Action	Rescues	Minor	Major Resusc,
2	3		15	1			
1	0		134	7			
10	2		5	1			
2	0		31	0			
0	0		16	0			
0	0		0	0			
0	0		0	3			
0	0		0	0			
G	0		1	0			
0	0		10	0			
0	0		5	0			
0	Q		4	0			
1	1		7	1			
1	0		2	0			
0	0		3	0			
1	1		0	0			
0	0		8	0			

TOTAL 78% 5% 17% 25001365 21034 866 44114 692 7 242 13

DEPARTMENT OF PARKS AND RECREATION  
 NATIONAL DIVISION STATISTICAL ACTIVITIES REPORT  
 11/01/117 - 12/31/87

kuk Percentap Mil finest Firs Aid Surfing Diving Last Is Firs bit hike Chil'rea  
 Arse Sus Surf Sri\* ITT. Attire kscass Kim llaior emu. kausists kcidnis kciests Assisi Assist assist Assist

652	61	211	MINI nita	11		
DI	LI	111	114441726	51224	225	
761	01	MI	2134195	44123	III	
591	111	301	311553	317	72	
581	11	411	189727	117211	72	
631	121	251	126851	2004	5	
711	51	1411	458343	4067	2	
881	11	111	125818	14::	0	
831	-21	_,:171	,,7244',	54._	0	
72%	121	161	,313760	5635	23	
551	141	111	173357	4810	45	i
651	201	151	124291	4728	3	
781	11	21%	577829	8202	124	
711	131	161	212570	8049	12	
all	51	341	160557	4516	18	
541	131	335	186550	5100	28	
641	01	361	472203	8685	4	
601	181	221	449E51	10303	15	

781	61	161	24852053	04459	853						
51	3	2	4	0	31	15	4	I	23		
3011	k	1	71	0	221	43	5	0	27		
IR	3	3	1	•	44	HI	15	0	11		
53	1	4	13	4	4	H	4	2	4		
14	4	0	4	6	-	6	2	0	5		
11	0	0	0	•	1	•	6	0	6		
2	0	0	4	0	-2	0	0	0	0		
1	0	•	0	0	0	0	a	0	0		
0	4	•	•	•	•	•	•	•	•		
7	0	•	•	•	•	•	•	•	•		
26	0	0	•	27	-	0	0	4	1	0	0
6	1	1	1	0	1	1	2	1	1		
11	6	0	0	0	0	0	1	0	1		
5	4	•	2	4	0-	0	3	2	1	0	
IL	0	6	6	11	6	3	1	6	1		
i	0	0	0	5	e	1	1	1	1		
7	1	1	4	0	4	2	6	4	6		
IL	1	a	4	4	•	1	6	1	3		

627 16 139 • 307 140 6 71

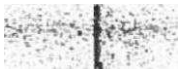
-KANOW114111K12416111111SANDYNAKAP1111RELOVSKALLUAKUALOA  
 -KARAM  
 7SUNSETDUALKERAENANA1NEA511NANAKELIRNLIPOKA1RAMA

m TOTAL

M I  
 14513  
 224111 122 318 492 399 179 43 54 152 67 192 140 277 232 VI 262

43425





DEPARTMENT OF PARKS AND RECREATION  
 WATER SAFETY DIVISION STATISTICAL ACTIVITIES REPORT - JULY 1984 - JUNE 1985

BEACH AREA	ATTENDANCE	RESCUES	FIRST AID		SURFING ACCIDENTS	RESUSCITATION	LOST CHILDREN	AMBULANCE ASSISTANCE	POLICE ASSISTANCE	HELICOPTER ASSISTANCE	DROWNINGS
			MINOR	MAJOR							
Ala Moana	1,707,731	24	1,056	55	9	8	27	16	21	1	
Waikiki	5,511,525	122	5,801	247	90	11	66	21	24	0	
Hanauma Bay	1,578,846	42	8,854	53	0	4	42	14	4	1	
Sandy	495,177	100	713	85	48	1	0	21	5	3	
Makapuu	204,176	57	238	12	4	3	0	4	1	1	
Bellows	183,484	5	398	3	0	0	1	1	1	0	
Kailua	540,546	6	176	14	5	0	0	1	3	0	
Kualoa	74,128	2	56	2	0	0	0	0	0	0	
Kahana	13,458	0	8	0	0	0	0	0	0	0	
Sunset	115,275	36	14	9	1	0	0	0	1	1	
Ehukai	180,832	46	97	44	25	0	0	4	8	0	
Kewaena	145,855	16	50	10	2	0	0	0	1	0	
Waimea Bay	602,309	104	69	31	0	1	0	8	1	7	
Alii	158,140	24	42	6	0	0	0	0	0	0	
Nanakuli	155,609	17	78	4	1	0	0	0	0	0	
Maili	193,025	10	124	13	4	0	0	4	1	0	
Pokai Bay	317,184	5	241	14	0	2	3	2	0	1	
Makaha	352,237	8	107	26	2	1	0	1	1	1	
TOTALS	12,529,637	624	18,122	624	191	31	139	97	72	16	

DEPARTMENT OF PARKS AND RECREATION  
WATER SAFETY DIVISION STATISTICAL ACTIVITIES REPORT - JULY 1983 - JUNE  
1984

Beach Area	Attendance	Rescues	First Aid		Surfing Accidents	Resuscitation	Lost Children	Ambulance Assistance	Police Assistance	Helicopter Assistance	Drownings
			Minor	Major							
Ala Moana	3,556,447	12	980	75	10	2	47	17	15	1	0
Waikiki	5,145,204	64	5,401	632	99	14	73	50	37	0	0
Hanauma Bay	3,688,884	66	8,960	141	4	6	41	27	2	2	3
	2,031,341										
Sandy	1,680,566	156	1,024	73	4	3	1	18	4	0	0
Makapuu	855,904	231	315	18	0	4	0	9	3	1	0
Bellows	462,322	1	298	0	0	0	0	0	0	0	0
Kailua	550,506	17	572	7	0	0	0	5	0	0	0
Kualoa	63,063	5	84	0	0	0	0	0	0	0	0
Kahana	14,973	0	31	1	0	0	0	0	0	0	0
Sunset	230,187	69	29	10	0	0	0	3	3	2	0
Ehukai	1,177,764	130	85	50	0	1	3	7	1	3	0
Kewaena	339,522	15	45	15	0	0	2	1	0	3	0
Waimea Bay	457,309	115	44	80	0	0	0	9	2	1	0
Alii	149,203	41	38	28	0	0	1	0	0	0	0
Nanakuili	213,567	9	146	4	0	0	1	0	0	0	0
Maui	539,869	34	217	50	0	0	0	2	1	0	0
Pokai Bay	283,488	3	182	7	0	0	2	2	0	0	0
Makaha	896,952	7	234	38	0	0	1	0	1	0	0
TOTALS	20,305,730	975	18,685	1,229	-	117	30	172	150	69	13

DEPARTMENT OF PARKS & RECREATION  
 WATER SAFETY DIVISION STATISTICAL ACTIVITIES REPORT - JULY 1982-JUNE 1983

Beach Area	Attendance	Rescues	First Aid		Surfing Accidents	Resuscitation	Lost Children	Police Assistance	Ambulance Assistance	Helicopter Assistance	Drownings
			Minor	Major							
Ala Moana	2,238,219	28	979	49	4	6	24	7	12	0	0
Waikiki	5,362,181	23	6,069	330	81	11	45	22	28	0	0
Hanauma Bay	470,042,291	66	10,586	93	8	7	6	4	21	4	3
Sandy	1,706,291	135	742	68	8	2	2	5	21	1	1
Makapuu	257,873	82	446	25	18	0	0	2	3	0	0
Bellows	652,447	1	418	3	0	0	0	0	0	0	0
Kailua	712,945	32	585	15	1	2	4	1	2	0	0
Kualoa	67,802	12	72	7	0	0	3	0	2	0	0
Kahana	19,867	0	10	2	0	0	0	0	0	0	0
Sunset	607,387	56	33	18	4	0	0	0	0	0	0
Ehukai	1,807,715	64	57	59	17	1	0	2	2	1	0
Kewaena	722,009	30	47	15	5	2	0	3	1	0	0
Waimea Bay	467,658	157	128	18	3	0	0	0	2	1	0
Alii	196,474	27	42	18	7	0	0	3	3	0	0
Nanakuli	164,695	15	62	10	2	0	0	0	0	0	0
Maili	237,480	38	247	55	5	0	0	0	0	0	0
Pokai Bay	249,484	18	165	6	0	1	2	0	0	0	0...
Makaha	882,554	12	152	16	7	0	1	0	1	0	0
<b>TOTALS</b>	<b>20,362,372</b>	<b>856</b>	<b>10,840</b>	<b>807</b>	<b>170</b>	<b>32</b>	<b>86</b>	<b>49</b>	<b>98</b>	<b>7</b>	<b>4</b>

DEPARTMENT OF PARKS & RECREATION  
 WATER SAFETY DIVISION STATISTICAL ACTIVITIES REPORT - JULY 1981 -  
 JUNE 1982

Beach Area	Attendance	Rescues	First Aid		Surfing Accidents	Resuscitation	Lost Children	Ambulance Assistance	Police Assistance	Helicopter Assistance	Near Drownings
			Minor	Major							
Ala Moana	1,270,309	10	1,132	40	0	2	17	4	2	0	1
Waikiki	4,789,500	131	5,715	266	29	11	43	37	15	0	2
Hanauma Bay	1,409,115	32	5,021	33	0	2	0	7	3	1	0
Sandy	658,821	215	947	52	9	1	0	10	1	0	1
Makapuu	256,485	153	704	23	8	0	0	0	0	0	0
Bellows <sub>1</sub>	220,867	2	758	1	0	0	0	0	0	0	0
Kailua <sub>1</sub>	345,130	3	300	0	0	0	0	0	0	0	0
Kualoa <sub>1</sub>	50,097	26	103	3	0	0	0	1	1	0	0
Kahana <sub>2</sub>	7,714	0	0	0	0	0	0	0	0	0	0
Sunset <sub>5</sub>	229,759	24	36	5	0	0	0	0	0	0	0
Ehukai	280,902	68	89	16	4	0	0	0	1	0	0
Kewaena	123,527	37	38	14	2	0	0	2	0	0	0
Waimea Bay	434,484	108	131	47	0	0	0	4	1	2	0
Alii <sub>1</sub>	232,513	27	114	17	1	0	0	0	0	0	0
Nanakuli	150,317	-3	53	6	2	1	0	1	1	0	0
Mali	199,993	11	73	5	0	0	0	0	0	0	0
Pokai Bay <sup>1</sup>	255,634	8	106	8	0	2	0	2	1	0	1
Makaha	329,784	22	30	27	3	0	0	2	0	0	0
	<u>10,764,317</u>	<u>880</u>	<u>15,350</u>	<u>563</u>	<u>58</u>	<u>19</u>	<u>-Cr</u>	<u>70</u>	<u>26</u>	<u>3</u>	<u>5</u>

1. Summer and weekends only

4. Summer only

2. Summer weekends only

5. Summer weekends and winter daily

3. weekends only

D.

DEP OF PARKS & RECREATION

WATER SAFETY DIVISION STATISTICAL ACTIVITIES REPORT - JULY 1980 - JUNE 1981

First Aid

Surfing

Lost

Ambulance

Beach Area	Attendance	Rescues	Minor	Major	Accidents	Resuscitation	Children	Assistance
Ala Moan	1,696,495 •	31	1,482	21	2	5	15	9
Waikiki	6,049,901	30	7,361	308	18	7	• 20	20
Hanauma Bay	2,425,068	35	9,088	43	-	1	7	14
Sandy	824,818	290	2,181	56	17	3	2	15
Nakapuu -	378,968	184	825	21	15	1		5
Belloas <sup>1</sup>	129,536	8	486	2	-	-	-4	
<b>Kailua,</b>	528,322	6	438	11	1	2	1	2
<b>Kualoa<sup>1</sup></b>	156,709	16	198	-	-	-	-	-
<b>Nallana<sup>2</sup></b>	19,066	-	-	-	-	-	-	-
Sunset <sup>5</sup>	213,927	55	73	4	3	-		
Ehukai	247,215	37	96	11	2	2	1	
KeWdena	62,375	14	16	1	-	-	-	
Wairria Bay	848,276	102	241	32	-	-	1	5
Alii	68,575	2	10	-	-	-	-	
Nanakmlil	165,268	1	211	3	-	-	-	
Mali	209,581	28	207	3	-	-	-	
Pokai Bayl	162,650	5	66	6	-	1	-	3
Makaha	530,422	22	225	16	6		-	
	14,715,172	907	23,204	538	6	22	51	75

**Police Assistance**      **Helicopter Assistance**      **Near Drownings D.0**

2	4	4
7	-	3
-	-	-
3	1	2
-	-	1
-	-	-
-	2	1
-	-	-
-	-	-
1	1	-
1	-	-

1

IND

MEI

1 1 M

M E I

# is a IT

1 - Summer and Weekends only

4 - Sumer only

2 - SWIM" weekends only

5 - Sunner.weekends and Winter daily

3 - Weekends only .

•  
E.

DEPARTMENT OF PARKS & RECREATION  
 WATER SAFETY DIVISION STATISTICAL ACTIVITIES REPORT - JULY 1978 THRU JUNE 1979

Beach Area	Attendance	Rescues	First Aid	Surfing Accidents	Resuscitation	Lost Children	Ambulance Assistance	Police Assistance	Helicopter Assistance	Drownings	D.O.
Ala Haan	1,990,618	8	29	8	3	1	8	33	1	1	
Waikiki	6,342,734	31	133	74	9	2	66	89			
Hanaurua	1,282,679	30	38	1	2		14			1	
Sandy	673,512	249	28	62	3		52	3	1		
Makapuu	482,364	170		19			11				
Bellows	371,421	1	34				4				
'	996,979	6	22	1		1	1	1			
Kailua	563,151	1					1				
Kualoa	48,914										
Kahana <sup>2</sup>	318,361	58	7	13	1		2				
Sunset <sup>5</sup>	287,518	57	6	26	1		3				
Ehukai	98,349	22	12	5			3				
KeWaena <sup>3</sup>	918,863	50	6	10	2		4				
Waimea Bay	51,700										
AlU <sup>4</sup>	222,864	4	4	1			2				
Nanakuli'	433,346	13	10	4			1			2	
Maili	419,708		3	1							
Pokai Bay <sup>1</sup>	543,521	28	8	21	1	1	6				
Makatea	16,046,602	765	338	270	23	4	187	126		2	

1 - Summer and Weekends only

2 - Summer weekends only

3 - Weekends only

4 - Summer only

5 - Summer weekends and winter daily



Lt.eAtilr.r.NT ue FARKS & REUREATIUN Kralat SAFETY DIVISION  
 STATISTICAL DATA - JULY 1978 THRU DEC. 1978

BEACH	ATTEND.	LST AID	SURF ACC.	RESCUE	RESUSC.	AMBU. ASST	LOST CHILD	DROWN	DOA	POLICE	HELI.-ASST.
Ala Moana	1,426,135	13	2	3	-	3	1	1	-	20	-
Waikiki	4,143,303	69	40	17	6	24	1	-	-	48	-
Hanauma	796,193	28	1	15	2	12	-	1	-	-	-
Sandy	430,898	12	32	124	1	24	-	-	-	1	-
Makapuu	369,173	5	9	103	-	4	-	-	-	-	-
Bellows	229,888	5	-	-	-	3	-	-	-	-	-
Kailua	416,256	15	1	-	-	-	-	-	-	-	-
Kualoa	244,289	-	-	1	-	-	-	-	-	-	-
Kahana Bay	35,115	-	-	-	-	-	-	-	-	-	-
Sunset	201,804	5	5	35	-	1	-	-	-	-	-
Ehukai	187,656	3	9	8	-	1	-	-	-	-	-
Kewaena	61,199	12	1	12	-	1	-	-	-	-	-
Waimea Bay	646,657	6	10	50	2	4	-	-	-	-	-
Alii	48,542	-	-	-	-	-	-	-	-	-	-
Nanakuli	163,883	2	-	-	-	1	-	-	-	-	-
Maili	349,681	2	3	10	-	1	-	-	-	-	-
Pokai Bay	349,334	1	1	-	-	-	-	-	-	-	-
Makaha	362,110	6	9	4	1	5	1	-	-	-	-
<b>TOTALS</b>	<u>10,462,116</u>	<u>184</u>	<u>123</u>	<u>382</u>	<u>12</u>	<u>84</u>	<u>3</u>	<u>2</u>	<u>0</u>	<u>69</u>	<u>0</u>

<u>BFX:13</u>	ATIMI).	1ST AID	SURF ACC.	RESCUE
Ala ?rt	1,426,135	13	2	3
Waikiki	4,143,303	69	40	17
Banauma	796,193	28	1	15
Sandy	430,898	12	32	124
Makapuu	369,173	5	9	103
Bellows	.229,888	5	-	-
Kailua	416,256	15	1	-
Kualoa	244,289	-	-	1
Kahan Bay	35,115	-	-	-
Sunset	201,804	5	5	35
Ehukai	187,656	3	9	8
Reweena	61,199	<b>12</b>	1	12
Waimea Bay	646,657	6	10	50
Alii	48,542	-	-	-
Nanakuli	163,883	2	-	-
Maili	349,681	2	3	10
Pokai Bay	349,334	1	1	-
Makaha	362,110	6	9	4
<b>TOTALS</b>	<b>10,462,116</b>	<b>184</b>	<b>123</b>	<b>382</b>
RESUSC.	AMEU. ASST	LOST amp	<u>DROWN</u>	DOA POLICE HMI -ASST. ..
-	3	1	1	- 20
6	24	1	-	- 48
2	12	-	1	- -

1	24	-	-	*-	1
	4	-	-	-	-
-	3	-	-	VIM	
-	-	-	-	111	AM.
-	-	-	•	-	
-	1	-	-	-	
-	1	-	-	-	...
-	1	-	-	MEM	
-2	4	-	-	-	ONO
-	1	-	-	-	
-	1	-	-	-	
-	-	-	-	-	
1	5	1	-	-	
12	84	3	2		

Counts taken every two (2) hours.

\*Attendance recording methods changed.

DEPARTMENT OF PARKS  
& RECREATION  
- VMER SAFETY  
DIVISION  
STATISTICAL  
DATA - JULY  
1977 THRU  
JUNE 1978

BEACH	ATTEND.	1ST AID	SURF ACC.	REL. TO	RESUSC.	AMUB. ASST.	LOST CHILD	BR OM	DOA	POLICE	EMI-ASST.
Ala Marla	1,062,471	35	10	11	2	15	7	1	1	18	-
Waikiki	3,563,250	160	90	53	3	66	17	2	-	64	-
Baratima	671,867	49	-	38	8	23	3	1	2	1	1
Sandy	397,827	18	51	189	17	25	-	2	2	-	-
Malrapuu	269,557	12	8	113	4	16	-	-	-	-	-
Bellows	211,294	15	2	2	1	3	-	-	-	1	-
Railua	272,121	30	2	3	-	-	-	-	-	-	-
Rualoa	91,772	1	-	8	-	2	-	-	-	-	-
Rabana Bay	36,743	5	1	-	-	-	-	-	-	-	-
Sunset	155,235	3 *	9	71	-	-	-	-	-	-	1
Ebukai	150,971	1	14	53	-	1	-	-	-	-	2
Kewaena	27,119	4	1	13	-	2	-	-	-	-	-
Eeimea Bay	488,231	18	14	140	2	7	-	1	-	-	4
All	32,960	2	2-	-	-	1	-	-	-	-	1
Nanakuli	103,907	4	-	4	1	2	-	-	-	-	-
Maili	161,401	10	15	25	-	1	-	-	-	-	1
Pcami	229,267	11	-	2	-	-	-	-	-	-	-

Makaha	<u>262,980</u>	<u>16</u>	<u>22</u>	<u>12</u>	<u>-</u>	<u>1</u>	<u>-</u>	<u>-</u>	<u>-</u>	<u>1</u>	<u>mi</u>
	<u>8,188,973</u>	<u>394</u>	<u>239</u>	<u>737</u>	<u>38</u>	<u>165</u>	<u>27</u>	<u>7</u>	<u>5</u>	<u>85</u>	<u>10</u>

\*Attendance counts recorded **three** (3) times during day.